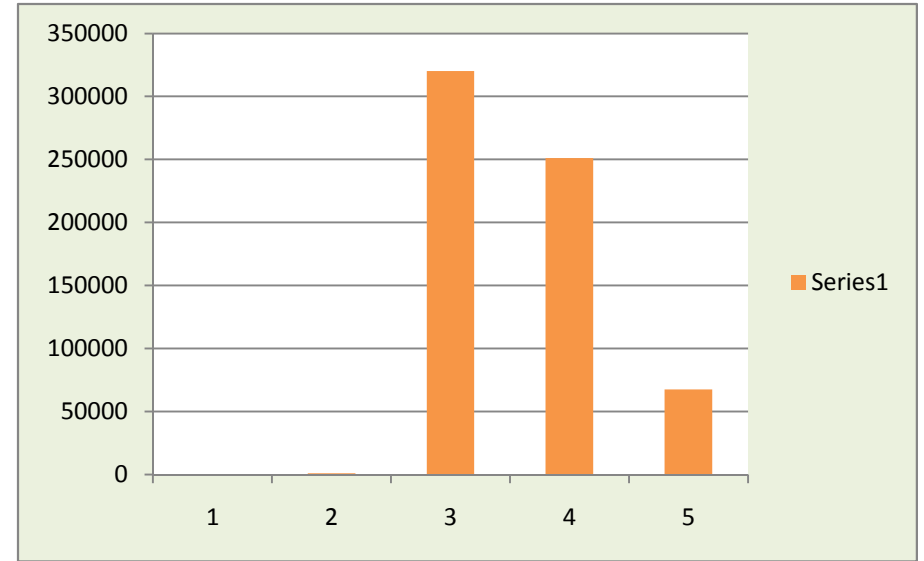


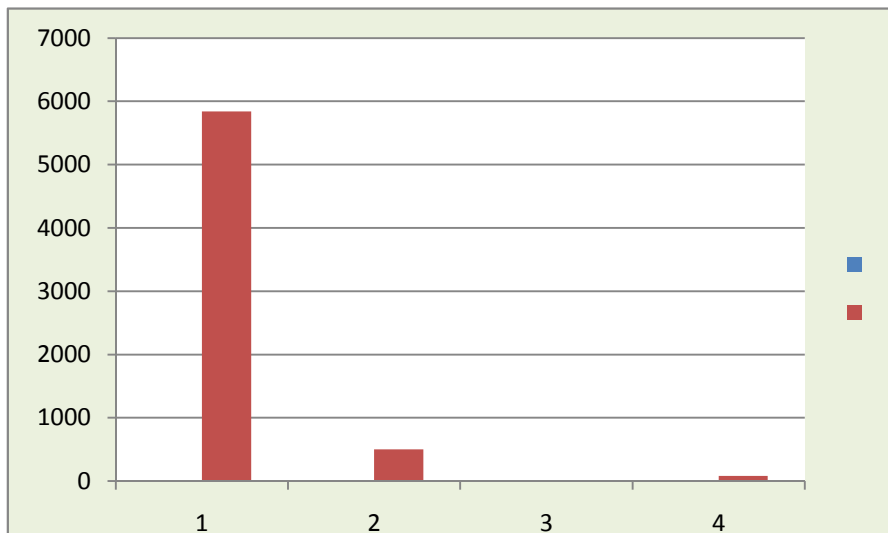
EXECUTIVE SUMMARY

Registration Details:		
1	No. of PAOs/Treasury Office Registered	134
2	No. of DDOs Registered	1007
3	No. of Subscribers Registered	320182
4	No. of IRA Compliant Subscribers	251166
5	No. of Non-IRA Compliant Subscribers	67668
Subscriber Contribution Details:		
1	NO. OF SCFs UPLOADED	5839
2	No. of SCFs Pending For M&B till date	500
3	% of SCFs Pending For M&B till date	8.56%
4	No. of PAOs/Treasury Offices whose SCFs are Pending for M&B	84

Registration Details:



Subscriber Contribution Details:



PAO /CDDO Registrat

1039

DDO Registered



NPS SUBSCRIPTION UPLOADING CONSISTENCY REPORT OF MHA AS ON 16/06/2011

Sr No.	PAO Reg	PAO/C DDO	PAO Name	Head	Associated PRANS	Jan-11	Feb-11	Mar-11	Apr-11	May-11
1	2005500	PAO	PAO (Assam Rifles), Ministry of Home Affairs, Shillong	AR	20861	16564	16541	Not Uploaded	Not Uploaded	Not Uploaded
2	2002814	PAO	PAO (Director of A/Cs-BSF), Ministry of Home Affairs, New Delhi	BSF	51600	41381	42091	246	42509	Not Uploaded
3	2002862	PAO	PAO (Census), Ministry of Home Affairs, New Delhi	CENSUS	139	112	112	111	110	109
4	2003842	CDDO	CDDO, Directorate of Census Operations, Mumbai	CENSUS	19	11	11	11	11	10
5	2003864	CDDO	CDDO, Directorate of Census Operations, Bhopal	CENSUS	39	Not Uploaded	Not Uploaded	30	29	Not Uploaded
6	2003875	CDDO	CDDO, Directorate of Census Operations, Chennai	CENSUS	55	46	45	46	44	44
7	2003886	CDDO	CDDO, Directorate of Census Operations, Shillong	CENSUS	16	16	16	16	16	15
8	2007202	CDDO	CDDO, Directorate of Census Operations, Tripura	CENSUS	12	10	10	10	10	10
9	2010676	CDDO	CDDO, Directorate of Census Operations, Jaipur	CENSUS	19	17	17	Not Uploaded	Not Uploaded	Not Uploaded
10	2011004	CDDO	CDDO, Directorate of Census Operations, Bangalore	CENSUS	22	21	21	21	21	21
11	2011074	CDDO	CDDO, Directorate of Census Operations, Bhubaneshwar	CENSUS	54	50	50	49	49	49
12	2011111	CDDO	CDDO, Directorate of Census Operations, Gandhinagar, Gujrat	CENSUS	34	29	30	30	30	30
13	2012824	CDDO	CDDO, Directorate of Census Operations, Kohima	CENSUS	7	Not Uploaded	Not Uploaded	Not Uploaded	Not Uploaded	Not Uploaded
14	2013093	CDDO	CDDO, Directorate of Census Operations, Kamrup Guwahati	CENSUS	30	26	26	26	26	26
15	2013141	CDDO	CDDO, Directorate of Census Operations, Hyderabad	CENSUS	29	27	26	26	26	26
16	2013351	CDDO	CDDO, Directorate of Census Operations, Kolkata	CENSUS	60	57	55	55	55	55
17	2013395	CDDO	CDDO, Directorate of Census Operations, Lakshadweep	CENSUS	0	Not Uploaded	Not Uploaded	Not Uploaded	Not Uploaded	Not Uploaded
18	2013443	CDDO	CDDO, Directorate of Census Operations, Goa	CENSUS	10	8	8	8	9	9
19	2014003	CDDO	CDDO, Directorate of Census Operations, Patna	CENSUS	54	1	49	50	49	49
20	2014294	CDDO	CDDO, Directorate of Census Operations, Puducherry	CENSUS	4	4	4	4	4	4
21	2014423	CDDO	CDDO, Directorate of Census Operations, Sikkim	CENSUS	8	8	8	8	8	8
22	2014482	CDDO	CDDO, Directorate of Census Operations, Chandigarh	CENSUS	52	35	34	34	34	33
23	2014493	CDDO	CDDO, Directorate of Census Operations, Trivandrum	CENSUS	40	27	30	29	29	Not Uploaded
24	2014806	CDDO	CDDO, Directorate of Census Operations, Jammu and Kashmir	CENSUS	6	Not Uploaded	Not Uploaded	1	5	6
25	2014821	CDDO	CDDO, Directorate of Census Operations, Aizwal	CENSUS	3	Not Uploaded	2	3	3	3
26	2014854	CDDO	CDDO, Directorate of Census Operations, Lucknow	CENSUS	126	Not Uploaded	Not Uploaded	Not Uploaded	Not Uploaded	Not Uploaded
27	2014891	CDDO	CDDO, Directorate of Census Operations, Shimla	CENSUS	19	12	14	14	Not Uploaded	Not Uploaded
28	2014961	CDDO	CDDO, Directorate of Census Operations, Imphal	CENSUS	11	Not Uploaded	Not Uploaded	Not Uploaded	Not Uploaded	Not Uploaded
29	2015403	CDDO	CDDO, Directorate of Census Operations, Port Blair	CENSUS	6	Not Uploaded	Not Uploaded	Not Uploaded	Not Uploaded	Not Uploaded
30	2015742	CDDO	CDDO, Directorate of Census Operations, Srinagar	CENSUS	33	Not Uploaded	Not Uploaded	18	Not Uploaded	21
31	2028795	CDDO	CDDO, Directorate of Census Operations, Ranchi	CENSUS	17	16	16	16	16	Not Uploaded
32	2030814	CDDO	CDDO, Directorate of Census Operations, Raipur	CENSUS	16	15	13	Not Uploaded	Not Uploaded	13
33	2002792	PAO	RPAO (CISF), Ministry of Home Affairs, Chennai	CISF	3053	2351	2393	2590	2719	2640
34	2002840	PAO	RPAO (CISF), Ministry of Home Affairs, Ranchi	CISF	1007	919	901	905	937	Not Uploaded
35	2002851	PAO	PAO (CISF), Ministry of Home Affairs, New Delhi	CISF	9907	9208	9205	9228	8655	8492
36	2002873	PAO	RPAO (CISF), Ministry of Home Affairs, Kolkata	CISF	848	746	738	739	804	801
37	2003853	CDDO	CDDO, Central Industrial Security Force Unit BHEL, Bhopal	CISF	275	237	228	224	251	244
38	2004306	CDDO	CDDO, Central Industrial Security Force Unit, Rourkela	CISF	737	660	661	657	685	672
39	2005382	CDDO	CDDO, Central Industrial Security Force Unit Group HQRS, Navi Mumbai	CISF	1384	1190	1181	1216	1226	1302
40	2006981	CDDO	CDDO, Central Industrial Security Force Unit Group HQRS, Guwahati	CISF	887	790	784	780	832	821
41	2007644	CDDO	CDDO, Central Industrial Security Force Unit Oil, Dibrugarh	CISF	1197	1074	1070	1051	1151	1156
42	2007736	CDDO	CDDO, Central Industrial Security Force Unit BNP, Dewas	CISF	93	94	94	93	92	92
43	2007784	CDDO	CDDO, Central Industrial Security Force Unit BSP, Bhilai	CISF	2259	1056	1063	Not Uploaded	1104	1677
44	2008031	CDDO	CDDO, Central Industrial Security Force Unit MPT, Goa	CISF	304	261	259	272	287	285
45	2008576	CDDO	CDDO, Central Industrial Security Force Unit BSP, Bokaro	CISF	1693	1482	1492	1486	1645	1623
46	2008580	CDDO	CDDO, Central Industrial Security Force Unit Group HQRS, Patna	CISF	350	302	305	Not Uploaded	335	333
47	2008591	CDDO	CDDO, Central Industrial Security Force Unit BCLL, Dhanbad	CISF	1240	1112	1112	Not Uploaded	1202	1199
48	2008602	CDDO	CDDO, Central Industrial Security Force Unit IOC, Begusarai	CISF	96	92	91	88	90	87
49	2008635	CDDO	CDDO, Central Industrial Security Force Unit BHEL, Haridwar	CISF	336	258	256	253	315	299
50	2008683	CDDO	CDDO, Central Industrial Security Force Unit PPT, Paradeep	CISF	1326	1685	1681	1672	1069	1037

Sr No.	PAO Reg	PAO/C DDO	PAO Name	Head	Associated PRANS	Jan-11	Feb-11	Mar-11	Apr-11	May-11
51	2008812	CDDO	CDDO, Central Industrial Security Force Unit KSTPP, Korba	CISF	858	713	716	707	795	785
52	2009033	CDDO	CDDO, Central Industrial Security Force Unit SSTPP, Shaktinagar	CISF	1023	879	874	870	941	923
53	2009280	CDDO	CDDO, Central Industrial Security Force Unit ONGC, Jorhat	CISF	186	Not Uploaded	Not Uploaded	Not Uploaded	Not Uploaded	Not Uploaded
54	2009582	CDDO	CDDO, Central Industrial Security Force Unit FBP, Malda	CISF	331	327	327	324	376	Not Uploaded
55	2009744	CDDO	CDDO, Central Industrial Security Force Unit DSP, Durgapur	CISF	1694	1512	1504	1494	1318	1513
56	2010035	CDDO	CDDO, Central Industrial Security Force Unit MAMC, Durgapur	CISF	52	47	48	48	47	48
57	2011310	CDDO	CDDO, Central Industrial Security Force Unit CPT, Ernakulam	CISF	170	110	111	112	162	161
58	2012533	CDDO	CDDO, Central Industrial Security Force Unit FACT LTD, Ernakulam	CISF	621	477	473	506	585	Not Uploaded
59	2012581	CDDO	CDDO, Central Industrial Security Force Unit, Nellore	CISF	202	170	168	167	196	195
60	2012592	CDDO	CDDO, Central Industrial Security Force Unit DAE, Kalpakkam	CISF	238	230	226	227	229	225
61	2013233	CDDO	CDDO, Central Industrial Security Force Unit Unit HEP, Uri, Baramulla	CISF	198	183	178	176	176	169
62	2013583	CDDO	CDDO, Central Industrial Security Force Unit SPM, Hoshangabad	CISF	170	161	159	157	163	160
63	2013771	CDDO	CDDO, Central Industrial Security Force Unit RCFL, Mumbai	CISF	1573	1376	1430	1446	1444	1445
64	2013863	CDDO	CDDO, Central Industrial Security Force Unit Group HQRS, Ahmedabad	CISF	1209	1099	1127	1085	1165	Not Uploaded
65	2014095	CDDO	CDDO, Central Industrial Security Force Unit Ist Res Bn, Barwaha, Khargone	CISF	665	1230	1226	1234	477	426
66	2014832	CDDO	CDDO, Central Industrial Security Force Unit NFL, Nangal	CISF	445	391	388	389	422	420
67	2015005	CDDO	CDDO, Central Industrial Security Force Unit NISA, Hyderabad	CISF	2557	1125	1122	Not Uploaded	2272	2278
68	2015075	CDDO	CDDO, Central Industrial Security Force Unit, Visakhapatnam	CISF	683	618	616	606	656	646
69	2015366	CDDO	CDDO, Central Industrial Security Force Unit VSSC Post: ISRO, Thumba	CISF	530	435	465	454	490	504
70	2028692	CDDO	CDDO, CISF Unit (SHEP), Salal, Reasi	CISF	46	35	33	33	42	44
71	2028946	CDDO	CDDO, CISF Unit DHEP, Dulhasti	CISF	187	189	189	188	185	166
72	2005511	PAO	PAO (CRPF), Ministry of Home Affairs, New Delhi	CRPF	116616	94939	95583	96187	97894	103492
73	2023140	PAO	RPAO (CRPF), Ministry of Home Affairs, Hyderabad	CRPF	1	1	1	1	1	Not Uploaded
74	2030976	PAO	RPAO (CRPF), Ministry of Home Affairs, Raipur	CRPF	1	1	1	Not Uploaded	Not Uploaded	Not Uploaded
75	2006185	PAO	PAO XVI (Delhi Police Man Singh Road), Ministry of Home Affairs, New Delhi	DP	9765	10286	10227	10359	10348	Not Uploaded
76	2008112	PAO	PAO IV (Delhi Police), Ministry of Home Affairs, New Delhi	DP	18613	15342	16238	Not Uploaded	15649	16380
77	2011096	CDDO	CDDO, Hindi Teaching Scheme (Western Region), Navi Mumbai	HT	2	2	2	Not Uploaded	Not Uploaded	Not Uploaded
78	2011170	CDDO	CDDO, Hindi Teaching Scheme (North East Region), Guwahati	HT	8	6	6	6	6	6
79	2012835	CDDO	CDDO, Hindi Teaching Scheme (Eastern Region), Kolkata	HT	2	2	2	2	2	2
80	2002803	PAO	RPAO (IB), Ministry of Home Affairs, Shillong	IB	86	80	48	84	52	40
81	2005522	PAO	PAO (IB), Ministry of Home Affairs, New Delhi	IB	1233	7	1076	Not Uploaded	Not Uploaded	Not Uploaded
82	2014751	CDDO	CDDO, Subsidiary Intelligence Bureau, Srinagar	IB	130	104	111	111	102	Not Uploaded
83	2014773	CDDO	CDDO, Subsidiary Intelligence Bureau, Varanasi	IB	35	34	35	35	30	30
84	2014784	CDDO	CDDO, Subsidiary Intelligence Bureau, Dibrugarh	IB	140	126	125	124	122	124
85	2014810	CDDO	CDDO, Subsidiary Intelligence Bureau, Ahmedabad	IB	111	105	106	106	106	105
86	2014843	CDDO	CDDO, Subsidiary Intelligence Bureau, Kolkata	IB	126	87	92	92	97	16
87	2014913	CDDO	CDDO, Subsidiary Intelligence Bureau, Guwahati	IB	66	59	59	60	63	64
88	2015053	CDDO	CDDO, Subsidiary Intelligence Bureau, Aizwal	IB	83	81	78	78	78	Not Uploaded
89	2015064	CDDO	CDDO, Subsidiary Intelligence Bureau, Jammu	IB	124	94	96	96	82	85
90	2015145	CDDO	CDDO, Subsidiary Intelligence Bureau, Amritsar	IB	135	149	154	154	161	Not Uploaded
91	2015156	CDDO	CDDO, Subsidiary Intelligence Bureau, Bangalore	IB	106	102	103	105	122	83
92	2015160	CDDO	CDDO, Subsidiary Intelligence Bureau, Raipur	IB	54	Not Uploaded	Not Uploaded	Not Uploaded	Not Uploaded	Not Uploaded
93	2015171	PAO	Office of SIB (ITBF), Leh	IB	76	61	60	59	58	57
94	2015182	CDDO	CDDO, Subsidiary Intelligence Bureau, Lucknow	IB	89	59	Not Uploaded	68	1	Not Uploaded
95	2015204	CDDO	CDDO, Subsidiary Intelligence Bureau, Bhopal	IB	441	63	64	67	67	67
96	2015215	CDDO	CDDO, Subsidiary Intelligence Bureau, Gangtok	IB	81	68	68	71	72	71
97	2015226	CDDO	CDDO, Subsidiary Intelligence Bureau, Chennai	IB	130	70	50	44	43	Not Uploaded
98	2015241	CDDO	CDDO, Office of The Deputy Director, Home Affairs, Nagpur	IB	62	48	48	49	1	Not Uploaded
99	2015252	CDDO	CDDO, Subsidiary Intelligence Bureau, Trivandrum	IB	34	30	29	30	26	Not Uploaded
100	2015322	CDDO	CDDO, Subsidiary Intelligence Bureau, Siliguri	IB	23	17	17	21	21	Not Uploaded
101	2015344	CDDO	CDDO, Subsidiary Intelligence Bureau, Patna	IB	75	64	65	66	59	Not Uploaded
102	2015355	CDDO	CDDO, Subsidiary Intelligence Bureau, Mumbai	IB	365	299	297	299	295	311
103	2015451	CDDO	CDDO, Subsidiary Intelligence Bureau, Dehradun	IB	43	38	38	38	Not Uploaded	Not Uploaded

Sr No.	PAO Reg	PAO/C DDO	PAO Name	Head	Associated PRANS	Jan-11	Feb-11	Mar-11	Apr-11	May-11
104	2015462	CDDO	CDDO, Subsidiary Intelligence Bureau, Hyderabad	IB	102	88	101	106	106	119
105	2015495	CDDO	CDDO, Subsidiary Intelligence Bureau, Agartala	IB	47	40	41	44	42	41
106	2015591	CDDO	CDDO, Subsidiary Intelligence Bureau, Chandigarh	IB	139	100	100	99	91	97
107	2015613	CDDO	CDDO, Subsidiary Intelligence Bureau, Kohima	IB	142	Not Uploaded	110	112	Not Uploaded	Not Uploaded
108	2016291	CDDO	CDDO, Office of The Section Officer, Home Affairs, Vijayawada	IB	45	41	40	42	38	Not Uploaded
109	2016394	CDDO	CDDO, Office of The Section Officer, Home Affairs, Shimla	IB	89	56	56	57	51	51
110	2016405	CDDO	CDDO, Subsidiary Intelligence Bureau, Kalimpong, Darjeeling	IB	59	55	55	57	55	55
111	2016416	CDDO	CDDO, Subsidiary Intelligence Bureau, Imphal	IB	71	56	57	58	56	Not Uploaded
112	2016674	CDDO	CDDO, Subsidiary Intelligence Bureau, Itanagar	IB	126	Not Uploaded	110	Not Uploaded	109	Not Uploaded
113	2016685	CDDO	CDDO, Subsidiary Intelligence Bureau, Jaipur	IB	252	123	155	168	174	Not Uploaded
114	2016700	CDDO	CDDO, Subsidiary Intelligence Bureau, Bhubaneshwar	IB	49	36	36	37	32	32
115	2016733	CDDO	CDDO, Subsidiary Intelligence Bureau Ministry of Home Affairs, Ranchi	IB	61	54	54	54	41	Not Uploaded
116	2005496	PAO	PAO (ITBP), Ministry of Home Affairs, New Delhi	ITBP	25464	22365	22633	22318	22928	Not Uploaded
117	2029974	PAO	RPAO (ITBP), Ministry of Home Affairs, Shillong	ITBP	1	1	1	1	1	1
118	2002781	PAO	PAO (Pension & Misc.), Ministry of Home Affairs, New Delhi	MISC	83	89	86	71	66	Not Uploaded
119	2005452	PAO	PAO (DCPW), Ministry of Home Affairs, New Delhi	MISC	70	50	50	51	51	67
120	2006395	PAO	PAO (National Security Gaurd), Ministry of Home Affairs, New Delhi	MISC	256	267	1	Not Uploaded	Not Uploaded	Not Uploaded
121	2006406	PAO	PAO (Sectt), Ministry of Home Affairs, New Delhi	MISC	947	837	835	804	804	Not Uploaded
122	2008694	CDDO	CDDO, Central Forensic Science Laboratory, Chandigarh	MISC	7	3	Not Uploaded	Not Uploaded	3	5
123	2009092	CDDO	CDDO, Office of The Government Examiner of Questioned Documents, Shimla	MISC	1	1	Not Uploaded	Not Uploaded	Not Uploaded	1
124	2010713	CDDO	CDDO, Central Forensic Science Laboratory, Hyderabad	MISC	10	10	Not Uploaded	Not Uploaded	Not Uploaded	Not Uploaded
125	2014795	CDDO	CDDO, National Fire Service College, Nagpur	MISC	11	6	7	7	7	7
126	2014935	CDDO	CDDO, Central Forensic Science Laboratory, Kolkata	MISC	10	6	6	6	9	10
127	2014950	CDDO	CDDO, SVBP National Police Academy, Hyderabad	MISC	32	27	18	18	18	Not Uploaded
128	2029064	PAO	PAO (NDMA), Ministry of Home Affairs, New Delhi	MISC	8	8	9	8	8	8
129	2030210	PAO	RPAO (NSG), Ministry of Home Affairs, Kolkata	NSG	4	2	2	4	4	4
130	2005474	PAO	PAO (Shashastra Seema Bal), Ministry of Home Affairs, New Delhi	SSB	1427	1255	1259	1259	1286	1309
131	2006174	PAO	ZPAO (Shashastra Seema Bal), Ministry of Home Affairs, Lucknow	SSB	7587	6989	6998	6963	6926	6955
132	2007143	PAO	ZPAO (Shashastra Seema Bal), Ministry of Home Affairs, Patna	SSB	9961	8681	9236	Not Uploaded	Not Uploaded	Not Uploaded
133	2013336	CDDO	CDDO, SHQ Sashashtra Seema Bal, Ranidanga	SSB	0	Not Uploaded	Not Uploaded	Not Uploaded	Not Uploaded	Not Uploaded
134	2013561	CDDO	CDDO, Frontier Head Quarters Sashashtra Seema Bal, Guwahati	SSB	10242	9340	9352	9303	9308	9272

Sr. No.	PAO Reg No	PAO / CDDO	PAO NAME	Head	Total SCF uploaded	SCF matched & Booked	SCF Pending for Matching & Booking	Percentage of SCFs not matched
1	2005500	PAO	PAO (Assam Rifles), Ministry of Home Affairs, Shillong	ASSAM RIFLES	33	33	0	0.00%
				ASSAM RIFLES Total	33	33	0	0.00%
2	2002814	PAO	PAO (Director of A/Cs-BSF), Ministry of Home Affairs, New Delhi	BSF	78	75	3	3.85%
				BSF Total	78	75	3	3.85%
3	2003842	CDDO	CDDO, Directorate of Census Operations, Mumbai	CENSUS	41	40	1	2.44%
4	2003864	CDDO	CDDO, Directorate of Census Operations, Bhopal	CENSUS	12	3	9	75.00%
5	2003875	CDDO	CDDO, Directorate of Census Operations, Chennai	CENSUS	61	59	2	3.28%
6	2003886	CDDO	CDDO, Directorate of Census Operations, Shillong	CENSUS	38	37	1	2.63%
7	2007202	CDDO	CDDO, Directorate of Census Operations, Tripura	CENSUS	43	43	0	0.00%
8	2010676	CDDO	CDDO, Directorate of Census Operations, Jaipur	CENSUS	43	43	0	0.00%
9	2011004	CDDO	CDDO, Directorate of Census Operations, Bangalore	CENSUS	38	38	0	0.00%
10	2011074	CDDO	CDDO, Directorate of Census Operations, Bhubaneswar	CENSUS	44	34	10	22.73%
11	2011111	CDDO	CDDO, Directorate of Census Operations, Gandhinagar, Gujrat	CENSUS	57	56	1	1.75%
12	2012824	CDDO	CDDO, Directorate of Census Operations, Kohima	CENSUS	39	34	5	12.82%
13	2013093	CDDO	CDDO, Directorate of Census Operations, Kamrup Guwahati	CENSUS	43	41	2	4.65%
14	2013141	CDDO	CDDO, Directorate of Census Operations, Hyderabad	CENSUS	31	28	3	9.68%
15	2013351	CDDO	CDDO, Directorate of Census Operations, Kolkata	CENSUS	82	82	0	0.00%
16	2013395	CDDO	CDDO, Directorate of Census Operations, Lakshadweep	CENSUS	8	7	1	12.50%
17	2013443	CDDO	CDDO, Directorate of Census Operations, Goa	CENSUS	37	37	0	0.00%
18	2014003	CDDO	CDDO, Directorate of Census Operations, Patna	CENSUS	53	48	5	9.43%
19	2014294	CDDO	CDDO, Directorate of Census Operations, Puducherry	CENSUS	29	29	0	0.00%
20	2014423	CDDO	CDDO, Directorate of Census Operations, Sikkim	CENSUS	31	26	5	16.13%
21	2014482	CDDO	CDDO, Directorate of Census Operations, Chandigarh	CENSUS	36	34	2	5.56%
22	2014493	CDDO	CDDO, Directorate of Census Operations, Trivandrum	CENSUS	30	26	4	13.33%
23	2014806	CDDO	CDDO, Directorate of Census Operations, Jammu and Kashmir	CENSUS	18	18	0	0.00%
24	2014821	CDDO	CDDO, Directorate of Census Operations, Aizwal	CENSUS	4	3	1	25.00%
25	2014854	CDDO	CDDO, Directorate of Census Operations, Lucknow	CENSUS	40	35	5	12.50%
26	2014891	CDDO	CDDO, Directorate of Census Operations, Shimla	CENSUS	42	36	6	14.29%
27	2014961	CDDO	CDDO, Directorate of Census Operations, Imphal	CENSUS	23	23	0	0.00%
28	2015403	CDDO	CDDO, Directorate of Census Operations, Port Blair	CENSUS	44	39	5	11.36%
29	2015742	CDDO	CDDO, Directorate of Census Operations, Srinagar	CENSUS	10	9	1	10.00%
30	2028795	CDDO	CDDO, Directorate of Census Operations, Ranchi	CENSUS	30	22	8	26.67%
31	2030814	CDDO	CDDO, Directorate of Census Operations, Raipur	CENSUS	14	6	8	57.14%
32	2002862	PAO	PAO (Census), Ministry of Home Affairs, New Delhi	CENSUS	42	42	0	0.00%
				CENSUS Total	1063	978	85	8.00%
33	2003853	CDDO	CDDO, Central Industrial Security Force Unit BHEL, Bhopal	CISF	51	51	0	0.00%
34	2004306	CDDO	CDDO, Central Industrial Security Force Unit, Rourkela	CISF	38	36	2	5.26%
35	2005382	CDDO	CDDO, Central Industrial Security Force Unit Group HQRS, Navi Mumbai	CISF	45	45	0	0.00%
36	2006981	CDDO	CDDO, Central Industrial Security Force Unit Group HQRS, Guwahati	CISF	36	36	0	0.00%

Sr. No.	PAO Reg No	PAO / CDDO	PAO NAME	Head	Total SCF uploaded	SCF matched & Booked	SCF Pending for Matching & Booking	Percentage of SCFs not matched
37	2007644	CDDO	CDDO, Central Industrial Security Force Unit Oil, Dibrugarh	CISF	39	39	0	0.00%
38	2007736	CDDO	CDDO, Central Industrial Security Force Unit BNP, Dewas	CISF	40	39	1	2.50%
39	2007784	CDDO	CDDO, Central Industrial Security Force Unit BSP, Bhilai	CISF	36	36	0	0.00%
40	2008031	CDDO	CDDO, Central Industrial Security Force Unit MPT, Goa	CISF	37	37	0	0.00%
41	2008576	CDDO	CDDO, Central Industrial Security Force Unit BSP, Bokaro	CISF	36	36	0	0.00%
42	2008580	CDDO	CDDO, Central Industrial Security Force Unit Group HQRS, Patna	CISF	38	38	0	0.00%
43	2008591	CDDO	CDDO, Central Industrial Security Force Unit BCCL, Dhanbad	CISF	39	39	0	0.00%
44	2008602	CDDO	CDDO, Central Industrial Security Force Unit IOC, Begusarai	CISF	40	39	1	2.50%
45	2008635	CDDO	CDDO, Central Industrial Security Force Unit BHEL, Haridwar	CISF	51	50	1	1.96%
46	2008683	CDDO	CDDO, Central Industrial Security Force Unit PPT, Paradeep	CISF	122	122	0	0.00%
47	2008812	CDDO	CDDO, Central Industrial Security Force Unit KSTPP, Korba	CISF	38	38	0	0.00%
48	2009033	CDDO	CDDO, Central Industrial Security Force Unit SSTPP, Shaktinagar	CISF	51	50	1	1.96%
49	2009280	CDDO	CDDO, Central Industrial Security Force Unit ONGC, Jorhat	CISF	32	32	0	0.00%
50	2009582	CDDO	CDDO, Central Industrial Security Force Unit FBP, Malda	CISF	41	39	2	4.88%
51	2009744	CDDO	CDDO, Central Industrial Security Force Unit DSP, Durgapur	CISF	36	36	0	0.00%
52	2010035	CDDO	CDDO, Central Industrial Security Force Unit MAMC, Durgapur	CISF	30	28	2	6.67%
53	2011310	CDDO	CDDO, Central Industrial Security Force Unit CPT, Ernakulam	CISF	40	40	0	0.00%
54	2012533	CDDO	CDDO, Central Industrial Security Force Unit FACT LTD, Ernakulam	CISF	46	46	0	0.00%
55	2012581	CDDO	CDDO, Central Industrial Security Force Unit, Nellore	CISF	37	36	1	2.70%
56	2012592	CDDO	CDDO, Central Industrial Security Force Unit DAE, Kalpakkam	CISF	36	36	0	0.00%
57	2013233	CDDO	CDDO, Central Industrial Security Force Unit Unit HEP, Uri, Baramulla	CISF	35	26	9	25.71%
58	2013583	CDDO	CDDO, Central Industrial Security Force Unit SPM, Hoshangabad	CISF	37	36	1	2.70%
59	2013771	CDDO	CDDO, Central Industrial Security Force Unit RCFL, Mumbai	CISF	134	134	0	0.00%
60	2013863	CDDO	CDDO, Central Industrial Security Force Unit Group HQRS, Ahmedabad	CISF	34	33	1	2.94%
61	2014095	CDDO	CDDO, Central Industrial Security Force Unit Ist Res Bn, Barwaha, Kharg	CISF	35	35	0	0.00%
62	2014832	CDDO	CDDO, Central Industrial Security Force Unit NFL, Nangal	CISF	35	35	0	0.00%
63	2015005	CDDO	CDDO, Central Industrial Security Force Unit NISA, Hyderabad	CISF	40	32	8	20.00%
64	2015075	CDDO	CDDO, Central Industrial Security Force Unit, Visakhapatnam	CISF	39	39	0	0.00%
65	2015366	CDDO	CDDO, Central Industrial Security Force Unit VSSC Post: ISRO, Thumba	CISF	34	30	4	11.76%
66	2028692	CDDO	CDDO, CISF Unit (SHEP), Salal, Reasi	CISF	14	13	1	7.14%
67	2028946	CDDO	CDDO, CISF Unit DHEP, Dulhasti	CISF	14	14	0	0.00%
68	2002792	PAO	RPAO (CISF), Ministry of Home Affairs, Chennai	CISF	42	42	0	0.00%
69	2002840	PAO	RPAO (CISF), Ministry of Home Affairs, Ranchi	CISF	42	42	0	0.00%
70	2002851	PAO	PAO (CISF), Ministry of Home Affairs, New Delhi	CISF	50	50	0	0.00%
71	2002873	PAO	RPAO (CISF), Ministry of Home Affairs, Kolkata	CISF	39	38	1	2.56%
				CISF Total	1659	1623	36	2.17%
72	2005511	PAO	PAO (CRPF), Ministry of Home Affairs, New Delhi	CRPF	64	59	5	7.81%
73	2023140	PAO	RPAO (CRPF), Ministry of Home Affairs, Hyderabad	CRPF	16	16	0	0.00%
74	2030976	PAO	RPAO (CRPF), Ministry of Home Affairs, Raipur	CRPF	2	2	0	0.00%

Sr. No.	PAO Reg No	PAO / CDDO	PAO NAME	Head	Total SCF uploaded	SCF matched & Booked	SCF Pending for Matching & Booking	Percentage of SCFs not matched
				CRPF Total	82	77	5	6.10%
75	2006185	PAO	PAO XVI (Delhi Police Man Singh Road), Ministry of Home Affairs, New Delhi	DELHI POLICE	47	46	1	2.13%
76	2008112	PAO	PAO IV (Delhi Police), Ministry of Home Affairs, New Delhi	DELHI POLICE	35	32	3	8.57%
				DELHI POLICE Total	82	78	4	4.88%
77	2011096	CDDO	CDDO, Hindi Teaching Scheme (Western Region), Navi Mumbai	HINDI TEACHING	20	19	1	5.00%
78	2011170	CDDO	CDDO, Hindi Teaching Scheme (North East Region), Guwahati	HINDI TEACHING	42	40	2	4.76%
79	2012835	CDDO	CDDO, Hindi Teaching Scheme (Eastern Region), Kolkata	HINDI TEACHING	36	35	1	2.78%
				HINDI TEACHING Total	98	94	4	4.08%
80	2014751	CDDO	CDDO, Subsidiary Intelligence Bureau, Srinagar	IB	64	54	10	15.63%
81	2014773	CDDO	CDDO, Subsidiary Intelligence Bureau, Varanasi	IB	49	48	1	2.04%
82	2014784	CDDO	CDDO, Subsidiary Intelligence Bureau, Dibrugarh	IB	36	35	1	2.78%
83	2014810	CDDO	CDDO, Subsidiary Intelligence Bureau, Ahmedabad	IB	70	67	3	4.29%
84	2014843	CDDO	CDDO, Subsidiary Intelligence Bureau, Kolkata	IB	91	67	24	26.37%
85	2014913	CDDO	CDDO, Subsidiary Intelligence Bureau, Guwahati	IB	47	43	4	8.51%
86	2015053	CDDO	CDDO, Subsidiary Intelligence Bureau, Aizwal	IB	30	27	3	10.00%
87	2015064	CDDO	CDDO, Subsidiary Intelligence Bureau, Jammu	IB	72	55	17	23.61%
88	2015145	CDDO	CDDO, Subsidiary Intelligence Bureau, Amritsar	IB	46	39	7	15.22%
89	2015156	CDDO	CDDO, Subsidiary Intelligence Bureau, Bangalore	IB	124	108	16	12.90%
90	2015160	CDDO	CDDO, Subsidiary Intelligence Bureau, Raipur	IB	75	39	36	48.00%
91	2015182	CDDO	CDDO, Subsidiary Intelligence Bureau, Lucknow	IB	54	25	29	53.70%
92	2015204	CDDO	CDDO, Subsidiary Intelligence Bureau, Bhopal	IB	26	24	2	7.69%
93	2015215	CDDO	CDDO, Subsidiary Intelligence Bureau, Gangtok	IB	68	40	28	41.18%
94	2015226	CDDO	CDDO, Subsidiary Intelligence Bureau, Chennai	IB	204	181	23	11.27%
95	2015241	CDDO	CDDO, Office of The Deputy Director, Home Affairs, Nagpur	IB	48	42	6	12.50%
96	2015252	CDDO	CDDO, Subsidiary Intelligence Bureau, Trivandrum	IB	47	28	19	40.43%
97	2015322	CDDO	CDDO, Subsidiary Intelligence Bureau, Siliguri	IB	42	33	9	21.43%
98	2015344	CDDO	CDDO, Subsidiary Intelligence Bureau, Patna	IB	77	70	7	9.09%
99	2015355	CDDO	CDDO, Subsidiary Intelligence Bureau, Mumbai	IB	66	66	0	0.00%
100	2015451	CDDO	CDDO, Subsidiary Intelligence Bureau, Dehradun	IB	39	27	12	30.77%
101	2015462	CDDO	CDDO, Subsidiary Intelligence Bureau, Hyderabad	IB	119	98	21	17.65%
102	2015495	CDDO	CDDO, Subsidiary Intelligence Bureau, Agartala	IB	53	50	3	5.66%
103	2015591	CDDO	CDDO, Subsidiary Intelligence Bureau, Chandigarh	IB	51	48	3	5.88%
104	2015613	CDDO	CDDO, Subsidiary Intelligence Bureau, Kohima	IB	68	60	8	11.76%
105	2016291	CDDO	CDDO, Office of The Section Officer, Home Affairs, Vijayawada	IB	52	50	2	3.85%
106	2016394	CDDO	CDDO, Office of The Section Officer, Home Affairs, Shimla	IB	41	39	2	4.88%
107	2016405	CDDO	CDDO, Subsidiary Intelligence Bureau, Kalimpong, Darjeeling	IB	65	63	2	3.08%
108	2016416	CDDO	CDDO, Subsidiary Intelligence Bureau, Imphal	IB	64	62	2	3.13%
109	2016674	CDDO	CDDO, Subsidiary Intelligence Bureau, Itanagar	IB	30	18	12	40.00%
110	2016685	CDDO	CDDO, Subsidiary Intelligence Bureau, Jaipur	IB	84	84	0	0.00%

Sr. No.	PAO Reg No	PAO / CDDO	PAO NAME	Head	Total SCF uploaded	SCF matched & Booked	SCF Pending for Matching & Booking	Percentage of SCFs not matched
111	2016700	CDDO	CDDO, Subsidiary Intelligence Bureau, Bhubaneswar	IB	36	32	4	11.11%
112	2016733	CDDO	CDDO, Subsidiary Intelligence Bureau Ministry of Home Affairs, Ranchi	IB	55	52	3	5.45%
113	2002803	PAO	RPAO (IB), Ministry of Home Affairs, Shillong	IB	84	64	20	23.81%
114	2005522	PAO	PAO (IB), Ministry of Home Affairs, New Delhi	IB	36	34	2	5.56%
115	2015171	PAO	Office of SIB (ITBF), Leh	IB	64	57	7	10.94%
				IB Total	2277	1929	348	15.28%
116	2005496	PAO	PAO (ITBP), Ministry of Home Affairs, New Delhi	ITBP	40	39	1	2.50%
117	2029974	PAO	RPAO (ITBP), Ministry of Home Affairs, Shillong	ITBP	11	10	1	9.09%
				ITBP Total	51	49	2	3.92%
118	2008694	CDDO	CDDO, Central Forensic Science Laboratory, Chandigarh	MISC	22	20	2	9.09%
119	2009092	CDDO	CDDO, Office of The Government Examiner of Questioned Documents, Si	MISC	19	19	0	0.00%
120	2010713	CDDO	CDDO, Central Forensic Science Laboratory, Hyderabad	MISC	34	33	1	2.94%
121	2014795	CDDO	CDDO, National Fire Service College, Nagpur	MISC	44	44	0	0.00%
122	2014935	CDDO	CDDO, Central Forensic Science Laboratory, Kolkata	MISC	47	38	9	19.15%
123	2014950	CDDO	CDDO, SVBP National Police Academy, Hyderabad	MISC	29	28	1	3.45%
124	2002781	PAO	PAO (Pension & Misc.), Ministry of Home Affairs, New Delhi	MISC	40	38	2	5.00%
125	2005452	PAO	PAO (DCPW), Ministry of Home Affairs, New Delhi	MISC	39	39	0	0.00%
126	2006395	PAO	PAO (National Security Gaurd), Ministry of Home Affairs, New Delhi	MISC	23	21	2	8.70%
127	2006406	PAO	PAO (Sectt), Ministry of Home Affairs, New Delhi	MISC	49	49	0	0.00%
128	2029064	PAO	PAO (NDMA), Ministry of Home Affairs, New Delhi	MISC	16	14	2	12.50%
				MISC Total	362	343	19	5.25%
129	2030210	PAO	RPAO (NSG), Ministry of Home Affairs, Kolkata	NSG	4	2	2	50.00%
				NSG Total	4	2	2	50.00%
130	2013336	CDDO	CDDO, SHQ Sashastra Seema Bal, Ranidanga	SSB	33	33	0	0.00%
131	2013561	CDDO	CDDO, Frontier Head Quarters Sashastra Seema Bal, Guwahati	SSB	55	55	0	0.00%
132	2005474	PAO	PAO (Shashastra Seema Bal), Ministry of Home Affairs, New Delhi	SSB	42	41	1	2.38%
133	2006174	PAO	ZPAO (Shashastra Seema Bal), Ministry of Home Affairs, Lucknow	SSB	129	129	0	0.00%
134	2007143	PAO	ZPAO (Shashastra Seema Bal), Ministry of Home Affairs, Patna	SSB	47	46	1	2.13%
				SSB Total	306	304	2	0.65%
				Grand Total	6095	5585	510	8.37%

Ageing Analysis - SCF not matched & booked

Sr. No.	PAO Reg No	PAO/CDDO	PAO NAME	Head	SCFs not Matched for						
					Upto 7 days	8-15 days	16-30 days	31-60 days	61-90 days	91-365 days	366 days onward
1	2002814	PAO	PAO (Director of A/Cs-BSF), Ministry of Home Affairs, New Delhi	BSF		1				1	1
				BSF Total	0	1	0	0	0	1	1
2	2003842	CDDO	CDDO, Directorate of Census Operations, Mumbai	CENSUS	1						
3	2003864	CDDO	CDDO, Directorate of Census Operations, Bhopal	CENSUS				1	2	2	4
4	2003875	CDDO	CDDO, Directorate of Census Operations, Chennai	CENSUS	2						
5	2003886	CDDO	CDDO, Directorate of Census Operations, Shillong	CENSUS							1
6	2011074	CDDO	CDDO, Directorate of Census Operations, Bhubaneshwar	CENSUS		3		1		4	2
7	2011111	CDDO	CDDO, Directorate of Census Operations, Gandhinagar, Gujrat	CENSUS		1					
8	2012824	CDDO	CDDO, Directorate of Census Operations, Kohima	CENSUS						5	
9	2013093	CDDO	CDDO, Directorate of Census Operations, Kamrup Guwahati	CENSUS						2	
10	2013141	CDDO	CDDO, Directorate of Census Operations, Hyderabad	CENSUS		1				1	1
11	2013395	CDDO	CDDO, Directorate of Census Operations, Lakshadweep	CENSUS						1	
12	2014003	CDDO	CDDO, Directorate of Census Operations, Patna	CENSUS			2			2	1
13	2014423	CDDO	CDDO, Directorate of Census Operations, Sikkim	CENSUS							5
14	2014482	CDDO	CDDO, Directorate of Census Operations, Chandigarh	CENSUS	1						1
15	2014493	CDDO	CDDO, Directorate of Census Operations, Trivandrum	CENSUS				1		3	
16	2014821	CDDO	CDDO, Directorate of Census Operations, Aizwal	CENSUS	1						
17	2014854	CDDO	CDDO, Directorate of Census Operations, Lucknow	CENSUS	2		1			2	
18	2014891	CDDO	CDDO, Directorate of Census Operations, Shimla	CENSUS		1			2	2	1
19	2015403	CDDO	CDDO, Directorate of Census Operations, Port Blair	CENSUS		1					4
20	2015742	CDDO	CDDO, Directorate of Census Operations, Srinagar	CENSUS	1						
21	2028795	CDDO	CDDO, Directorate of Census Operations, Ranchi	CENSUS				1	2	5	
22	2030814	CDDO	CDDO, Directorate of Census Operations, Raipur	CENSUS		1		6	1		
				CENSUS Total	8	8	3	10	7	29	20
23	2004306	CDDO	CDDO, Central Industrial Security Force Unit, Rourkela	CISF	1			1			
24	2007736	CDDO	CDDO, Central Industrial Security Force Unit BNP, Dewas	CISF				1			
25	2008602	CDDO	CDDO, Central Industrial Security Force Unit IOC, Begusarai	CISF				1			
26	2008635	CDDO	CDDO, Central Industrial Security Force Unit BHEL, Haridwar	CISF		1					
27	2009033	CDDO	CDDO, Central Industrial Security Force Unit SSTPP, Shaktinagar	CISF		1					
28	2009582	CDDO	CDDO, Central Industrial Security Force Unit FBP, Malda	CISF	1					1	
29	2010035	CDDO	CDDO, Central Industrial Security Force Unit MAMC, Durgapur	CISF		1					1
30	2012581	CDDO	CDDO, Central Industrial Security Force Unit, Nellore	CISF		1					
31	2013233	CDDO	CDDO, Central Industrial Security Force Unit Unit HEP, Uri, Baramull	CISF				2	1	2	4
32	2013583	CDDO	CDDO, Central Industrial Security Force Unit SPM, Hoshangabad	CISF		1					

Sr. No.	PAO Reg No	PAO/CDDO	PAO NAME	Head	Upto 7 days	8-15 days	16-30 days	31-60 days	61-90 days	91-365 days	366 days onward
33	2013863	CDDO	CDDO, Central Industrial Security Force Unit Group HQRS, Ahmedab	CISF	1						
34	2015005	CDDO	CDDO, Central Industrial Security Force Unit NISA, Hyderabad	CISF		1		1		6	
35	2015366	CDDO	CDDO, Central Industrial Security Force Unit VSSC Post: ISRO, Thum	CISF						2	2
36	2028692	CDDO	CDDO, CISF Unit (SHEP), Salal, Reasi	CISF		1					
37	2002873	PAO	RPAO (CISF), Ministry of Home Affairs, Kolkata	CISF	1						
				CISF Total	4	7	0	6	1	11	7
38	2005511	PAO	PAO (CRPF), Ministry of Home Affairs, New Delhi	CRPF	3					2	
				CRPF Total	3	0	0	0	0	2	0
39	2006185	PAO	PAO XVI (Delhi Police Man Singh Road), Ministry of Home Affairs, Ne	DELHI POLICE	1						
40	2008112	PAO	PAO IV (Delhi Police), Ministry of Home Affairs, New Delhi	DELHI POLICE		1				2	
				DELHI POLICE To	1	1	0	0	0	2	0
41	2011096	CDDO	CDDO, Hindi Teaching Scheme (Western Region), Navi Mumbai	HINDI TEACHING	1						
42	2011170	CDDO	CDDO, Hindi Teaching Scheme (North East Region), Guwahati	HINDI TEACHING							2
43	2012835	CDDO	CDDO, Hindi Teaching Scheme (Eastern Region), Kolkata	HINDI TEACHING			1				
				HINDI TEACHING	1	0	1	0	0	0	2
44	2014751	CDDO	CDDO, Subsidiary Intelligence Bureau, Srinagar	IB	1			2		7	
45	2014773	CDDO	CDDO, Subsidiary Intelligence Bureau, Varanasi	IB	1						
46	2014784	CDDO	CDDO, Subsidiary Intelligence Bureau, Dibrugarh	IB	1						
47	2014810	CDDO	CDDO, Subsidiary Intelligence Bureau, Ahmedabad	IB	3						
48	2014843	CDDO	CDDO, Subsidiary Intelligence Bureau, Kolkata	IB	8	1	2		2	11	
49	2014913	CDDO	CDDO, Subsidiary Intelligence Bureau, Guwahati	IB	1			1	2		
50	2015053	CDDO	CDDO, Subsidiary Intelligence Bureau, Aizwal	IB	1		1		1		
51	2015064	CDDO	CDDO, Subsidiary Intelligence Bureau, Jammu	IB	4			8		5	
52	2015145	CDDO	CDDO, Subsidiary Intelligence Bureau, Amritsar	IB	1	1			1	4	
53	2015156	CDDO	CDDO, Subsidiary Intelligence Bureau, Bangalore	IB	2		2	4		7	1
54	2015160	CDDO	CDDO, Subsidiary Intelligence Bureau, Raipur	IB	5					31	
55	2015182	CDDO	CDDO, Subsidiary Intelligence Bureau, Lucknow	IB			2	2		21	4
56	2015204	CDDO	CDDO, Subsidiary Intelligence Bureau, Bhopal	IB	1					1	
57	2015215	CDDO	CDDO, Subsidiary Intelligence Bureau, Gangtok	IB		2				23	3
58	2015226	CDDO	CDDO, Subsidiary Intelligence Bureau, Chennai	IB	3	3				17	
59	2015241	CDDO	CDDO, Office of The Deputy Director, Home Affairs, Nagpur	IB			2				4
60	2015252	CDDO	CDDO, Subsidiary Intelligence Bureau, Trivandrum	IB	1		1		4	12	1
61	2015322	CDDO	CDDO, Subsidiary Intelligence Burerau, Siliguri	IB	1	2	1			1	4
62	2015344	CDDO	CDDO, Subsidiary Intelligence Bureau, Patna	IB	2			3		1	1
63	2015451	CDDO	CDDO, Subsidiary Intelligence Bureau, Dehradun	IB	2	4			1	2	3
64	2015462	CDDO	CDDO, Subsidiary Intelligence Bureau, Hyderabad	IB		3	1	7	6	4	

Sr. No.	PAO Reg No	PAO/CDDO	PAO NAME	Head	Upto 7 days	8-15 days	16-30 days	31-60 days	61-90 days	91-365 days	366 days onward
65	2015495	CDDO	CDDO, Subsidiary Intelligence Bureau, Agartala	IB		2			1		
66	2015591	CDDO	CDDO, Subsidiary Intelligence Bureau, Chandigarh	IB		1		1		1	
67	2015613	CDDO	CDDO, Subsidiary Intelligence Bureau, Kohima	IB	6		1			1	
68	2016291	CDDO	CDDO, Office of The Section Officer, Home Affairs, Vijayawada	IB		1				1	
69	2016394	CDDO	CDDO, Office of The Section Officer, Home Affairs, Shimla	IB	1			1			
70	2016405	CDDO	CDDO, Subsidiary Intelligence Bureau, Kalimpong, Darjeeling	IB	1		1				
71	2016416	CDDO	CDDO, Subsidiary Intelligence Bureau, Imphal	IB	1						1
72	2016674	CDDO	CDDO, Subsidiary Intelligence Bureau, Itanagar	IB	7			1	4		
73	2016700	CDDO	CDDO, Subsidiary Intelligence Bureau, Bhubaneswar	IB	1			1	2		
74	2016733	CDDO	CDDO, Subsidiary Intelligence Bureau Ministry of Home Affairs, Ranchi	IB	2					1	
75	2002803	PAO	RPAO (IB), Ministry of Home Affairs, Shillong	IB	7			12		1	
76	2005522	PAO	PAO (IB), Ministry of Home Affairs, New Delhi	IB						2	
77	2015171	PAO	Office of SIB (ITBF), Leh	IB			1			3	3
				IB Total	64	20	15	43	24	157	25
78	2005496	PAO	PAO (ITBP), Ministry of Home Affairs, New Delhi	ITBP	1						
79	2029974	PAO	RPAO (ITBP), Ministry of Home Affairs, Shillong	ITBP	1						
				ITBP Total	2	0	0	0	0	0	0
80	2008694	CDDO	CDDO, Central Forensic Science Laboratory, Chandigarh	MISC	1						1
81	2010713	CDDO	CDDO, Central Forensic Science Laboratory, Hyderabad	MISC							1
82	2014935	CDDO	CDDO, Central Forensic Science Laboratory, Kolkata	MISC	1		1	1		5	1
83	2014950	CDDO	CDDO, SVBP National Police Academy, Hyderabad	MISC	1						
84	2002781	PAO	PAO (Pension & Misc.), Ministry of Home Affairs, New Delhi	MISC	1	1					
85	2006395	PAO	PAO (National Security Gaurd), Ministry of Home Affairs, New Delhi	MISC		2					
86	2029064	PAO	PAO (NDMA), Ministry of Home Affairs, New Delhi	MISC						2	
				MISC Total	4	3	1	1	0	7	3
87	2030210	PAO	RPAO (NSG), Ministry of Home Affairs, Kolkata	NSG	1			1			
				NSG Total	1	0	0	1	0	0	0
88	2005474	PAO	PAO (Shashastra Seema Bal), Ministry of Home Affairs, New Delhi	SSB		1					
89	2007143	PAO	ZPAO (Shashastra Seema Bal), Ministry of Home Affairs, Patna	SSB						1	
				SSB Total	0	1	0	0	0	1	0
				Grand Total	88	41	20	61	32	210	58

Sr No.	PAO Reg No	PAO/C DDO	PAO Name	Head	Associated PRANs	PRAN generated through Legacy Data	New PRAN generated through Phy. Form	IRA Complied (Out of B)	IRA Deserter	Total IRA Complied Subscribers	Percentage of Total IRA Complied	Non-IRA Complied Subscribers	Non-IRA Deserter	Total Non-IRA Complied Subscribers	Percentage of Total Non-IRA Complied	Deserters (Death, Resigning)	Percentage of Total Deserters	Under Process
					A	B(=A-C)	C	D	D1	E(=C+D-D1)	F(=E/A)	G(=A-E-D1)	G1	H(=G-G1)	I(=H/A)	J(=D1+G1)	K(=J/A)	L
1	2005500	PAO	PAO (Assam Rifles), Ministry of Home Affairs, Shillong	ASSAM RIFLES	21083	17457	3626	12622		16248	77.07%	4835		4835	22.93%	0	0.00%	
				ASSAM RIFLES	21083	17457	3626	12622	0	16248	77.07%	4835	0	4835	22.93%	0	0.00%	0
2	2002814	PAO	PAO (Director of A/Cs-BSF), Ministry of Home Affairs, New Delhi	BSF	59157	54726	4431	32136	126	36441	61.60%	22590	962	21628	36.56%	1088	1.84%	
				BSF Total	59157	54726	4431	32136	126	36441	61.60%	22590	962	21628	36.56%	1088	1.84%	0
3	2003842	CDDO	CDDO, Directorate of Census Operations, Mumbai	CENSUS	17	10	7	4		11	64.71%	6		6	35.29%	0	0.00%	
4	2003864	CDDO	CDDO, Directorate of Census Operations, Bhopal	CENSUS	38	9	29	7		36	94.74%	2		2	5.26%	0	0.00%	
5	2003875	CDDO	CDDO, Directorate of Census Operations, Chennai	CENSUS	55	35	20	35		55	100.00%	0		0	0.00%	0	0.00%	
6	2003886	CDDO	CDDO, Directorate of Census Operations, Shillong	CENSUS	16	9	7	8		15	93.75%	1		1	6.25%	0	0.00%	
7	2007202	CDDO	CDDO, Directorate of Census Operations, Tripura	CENSUS	12	5	7	3		10	83.33%	2	2	0	0.00%	2	16.67%	
8	2010676	CDDO	CDDO, Directorate of Census Operations, Jaipur	CENSUS	17	12	5	12		17	100.00%	0		0	0.00%	0	0.00%	
9	2011004	CDDO	CDDO, Directorate of Census Operations, Bangalore	CENSUS	22	16	6	14		20	90.91%	2		2	9.09%	0	0.00%	
10	2011074	CDDO	CDDO, Directorate of Census Operations, Bhubaneswar	CENSUS	54	9	45	8		53	98.15%	1		1	1.85%	0	0.00%	
11	2011111	CDDO	CDDO, Directorate of Census Operations, Gandhinagar, Gujrat	CENSUS	34	23	11	22		33	97.06%	1		1	2.94%	0	0.00%	
12	2012824	CDDO	CDDO, Directorate of Census Operations, Kohima	CENSUS	7	6	1	3		4	57.14%	3		3	42.86%	0	0.00%	
13	2013093	CDDO	CDDO, Directorate of Census Operations, Kamrup Guwahati	CENSUS	29	9	20	1		21	72.41%	8		8	27.59%	0	0.00%	
14	2013141	CDDO	CDDO, Directorate of Census Operations, Hyderabad	CENSUS	29	4	25	1		26	89.66%	3		3	10.34%	0	0.00%	
15	2013351	CDDO	CDDO, Directorate of Census Operations, Kolkata	CENSUS	60	10	50	9		59	98.33%	1		1	1.67%	0	0.00%	
16	2013443	CDDO	CDDO, Directorate of Census Operations, Goa	CENSUS	10	9	1	9		10	100.00%	0		0	0.00%	0	0.00%	
17	2014003	CDDO	CDDO, Directorate of Census Operations, Patna	CENSUS	54	30	24	30		54	100.00%	0		0	0.00%	0	0.00%	
18	2014294	CDDO	CDDO, Directorate of Census Operations, Puducherry	CENSUS	5	4	1	4		5	100.00%	0		0	0.00%	0	0.00%	
19	2014423	CDDO	CDDO, Directorate of Census Operations, Sikkim	CENSUS	8	0	8			8	100.00%	0		0	0.00%	0	0.00%	
20	2014482	CDDO	CDDO, Directorate of Census Operations, Chandigarh	CENSUS	54	27	27	11		38	70.37%	16		16	29.63%	0	0.00%	
21	2014493	CDDO	CDDO, Directorate of Census Operations, Trivandrum	CENSUS	40	28	12	24		36	90.00%	4		4	10.00%	0	0.00%	
22	2014806	CDDO	CDDO, Directorate of Census Operations, Jammu and Kashmir	CENSUS	6	2	4	2		6	100.00%	0		0	0.00%	0	0.00%	
23	2014821	CDDO	CDDO, Directorate of Census Operations, Aizwal	CENSUS	3	0	3			3	100.00%	0		0	0.00%	0	0.00%	
24	2014854	CDDO	CDDO, Directorate of Census Operations, Lucknow	CENSUS	131	36	95	27		122	93.13%	9		9	6.87%	0	0.00%	
25	2014891	CDDO	CDDO, Directorate of Census Operations, Shimla	CENSUS	19	7	12	3		15	78.95%	4		4	21.05%	0	0.00%	
26	2014961	CDDO	CDDO, Directorate of Census Operations, Imphal	CENSUS	11	7	4	6		10	90.91%	1		1	9.09%	0	0.00%	
27	2015403	CDDO	CDDO, Directorate of Census Operations, Port Blair	CENSUS	6	1	5	1		6	100.00%	0		0	0.00%	0	0.00%	
28	2015742	CDDO	CDDO, Directorate of Census Operations, Srinagar	CENSUS	31	7	24	5		29	93.55%	2		2	6.45%	0	0.00%	
29	2028795	CDDO	CDDO, Directorate of Census Operations, Ranchi	CENSUS	17	14	3	13		16	94.12%	1		1	5.88%	0	0.00%	
30	2030814	CDDO	CDDO, Directorate of Census Operations, Raipur	CENSUS	18	5	13			13	72.22%	5		5	27.78%	0	0.00%	
31	2002862	PAO	PAO (Census), Ministry of Home Affairs, New Delhi	CENSUS	140	85	55	71		126	90.00%	14		14	10.00%	0	0.00%	
				CENSUS Total	943	419	524	333	0	857	90.88%	86	2	84	8.91%	2	0.21%	0
32	2003853	CDDO	CDDO, Central Industrial Security Force Unit BHEL, Bhopal	CISF	280	231	49	223		272	97.14%	8		8	2.86%	0	0.00%	
33	2004306	CDDO	CDDO, Central Industrial Security Force Unit, Rourkela	CISF	712	622	90	605		695	97.61%	17	11	6	0.84%	11	1.54%	
34	2005382	CDDO	CDDO, Central Industrial Security Force Unit Group HQRS, Navi Mumbai	CISF	1400	955	445	932		1377	98.36%	23	13	10	0.71%	13	0.93%	
35	2006981	CDDO	CDDO, Central Industrial Security Force Unit Group HQRS, Guwahati	CISF	886	606	280	587		867	97.86%	19		19	2.14%	0	0.00%	1
36	2007644	CDDO	CDDO, Central Industrial Security Force Unit Oil, Dibrugarh	CISF	1233	901	332	896		1228	99.59%	5		5	0.41%	0	0.00%	
37	2007736	CDDO	CDDO, Central Industrial Security Force Unit BNP, Dewas	CISF	96	57	39	55		94	97.92%	2	2	0	0.00%	2	2.08%	
38	2007784	CDDO	CDDO, Central Industrial Security Force Unit BSP, Bhilai	CISF	2252	734	1518	696	9	2205	97.91%	38	28	10	0.44%	37	1.64%	
39	2008031	CDDO	CDDO, Central Industrial Security Force Unit MPT, Goa	CISF	300	274	26	274		300	100.00%	0		0	0.00%	0	0.00%	
40	2008576	CDDO	CDDO, Central Industrial Security Force Unit BSP, Bokaro	CISF	1687	1408	279	1401		1680	99.59%	7	6	1	0.06%	6	0.36%	
41	2008580	CDDO	CDDO, Central Industrial Security Force Unit Group HQRS, Patna	CISF	351	286	65	285		350	99.72%	1		1	0.28%	0	0.00%	
42	2008591	CDDO	CDDO, Central Industrial Security Force Unit BCCL, Dhanbad	CISF	1230	1034	196	1023		1219	99.11%	11		11	0.89%	0	0.00%	

Sr No.	PAO Reg No	PAO/C DDO	PAO Name	Head	Associated PRANs	PRAN generated through Legacy Data	New PRAN generated through Phy. Form	IRA Complied (Out of B)	IRA Deser	Total IRA Complied Subscribers	Percentage of Total IRA Complied	Non-IRA Complied Subscribers	Non-IRA Deser	Total Non-IRA Complied Subscribers	Percentage of Total Non-IRA Complied	Deserte rs (Death, Deserte r, Resigne d)	Percentage of Total Deserter s	Unde rProcess
					A	B(=A-C)	C	D	D1	E(=C+D-D1)	F (=E/A)	G (=A-E-D1)	G1	H(=G-G1)	I (=H/A)	J(=D1+G1)	K(=J/A)	L
43	2008602	CDDO	CDDO, Central Industrial Security Force Unit IOC, Begusarai	CISF	99	87	12	84		96	96.97%	3		3	3.03%	0	0.00%	
44	2008635	CDDO	CDDO, Central Industrial Security Force Unit BHEL, Haridwar	CISF	331	246	85	229		314	94.86%	17		17	5.14%	0	0.00%	
45	2008683	CDDO	CDDO, Central Industrial Security Force Unit PPT, Paradeep	CISF	1250	984	266	940	1	1205	96.40%	44	18	26	2.08%	19	1.52%	
46	2008812	CDDO	CDDO, Central Industrial Security Force Unit KSTPP, Korba	CISF	894	733	161	706		867	96.98%	27		27	3.02%	0	0.00%	
47	2009033	CDDO	CDDO, Central Industrial Security Force Unit SSTPP, Shaktinagar	CISF	990	744	246	714		960	96.97%	30		30	3.03%	0	0.00%	
48	2009280	CDDO	CDDO, Central Industrial Security Force Unit ONGC, Jorhat	CISF	157	155	2	141		143	91.08%	14		14	8.92%	0	0.00%	
49	2009582	CDDO	CDDO, Central Industrial Security Force Unit FBP, Malda	CISF	388	295	93	289		382	98.45%	6		6	1.55%	0	0.00%	1
50	2009744	CDDO	CDDO, Central Industrial Security Force Unit DSP, Durgapur	CISF	1668	1431	237	1343		1580	94.72%	88		88	5.28%	0	0.00%	
51	2010035	CDDO	CDDO, Central Industrial Security Force Unit MAMC, Durgapur	CISF	51	49	2	41		43	84.31%	8		8	15.69%	0	0.00%	
52	2011310	CDDO	CDDO, Central Industrial Security Force Unit CPT, Ernakulam	CISF	170	130	40	127		167	98.24%	3		3	1.76%	0	0.00%	
53	2012533	CDDO	CDDO, Central Industrial Security Force Unit FACT LTD, Ernakulam	CISF	627	566	61	550		611	97.45%	16		16	2.55%	0	0.00%	
54	2012581	CDDO	CDDO, Central Industrial Security Force Unit, Nellore	CISF	195	168	27	166		193	98.97%	2		2	1.03%	0	0.00%	
55	2012592	CDDO	CDDO, Central Industrial Security Force Unit DAE, Kalpakkam	CISF	236	189	47	185		232	98.31%	4	4	0	0.00%	4	1.69%	
56	2013233	CDDO	CDDO, Central Industrial Security Force Unit Unit HEP, Uri, Baramulla	CISF	194	179	15	154		169	87.11%	25		25	12.89%	0	0.00%	
57	2013583	CDDO	CDDO, Central Industrial Security Force Unit SPM, Hoshangabad	CISF	170	155	15	153		168	98.82%	2		2	1.18%	0	0.00%	
58	2013771	CDDO	CDDO, Central Industrial Security Force Unit RCFL, Mumbai	CISF	1603	1223	380	1181	3	1558	97.19%	42	22	20	1.25%	25	1.56%	
59	2013863	CDDO	CDDO, Central Industrial Security Force Unit Group HQRS, Ahmedabad	CISF	1169	958	211	886		1097	93.84%	72		72	6.16%	0	0.00%	
60	2014095	CDDO	CDDO, Central Industrial Security Force Unit Ist Res Bn, Barwaha, Khargone	CISF	629	561	68	478		546	86.80%	83	38	45	7.15%	38	6.04%	
61	2014832	CDDO	CDDO, Central Industrial Security Force Unit NFL, Nangal	CISF	442	352	90	327		417	94.34%	25		25	5.66%	0	0.00%	
62	2015005	CDDO	CDDO, Central Industrial Security Force Unit NISA, Hyderabad	CISF	2488	1182	1306	974	7	2273	91.36%	208	1	207	8.32%	8	0.32%	
63	2015075	CDDO	CDDO, Central Industrial Security Force Unit, Visakhapatnam	CISF	688	571	117	560		677	98.40%	11		11	1.60%	0	0.00%	
64	2015366	CDDO	CDDO, Central Industrial Security Force Unit VSSC Post: ISRO, Thumba	CISF	560	401	159	377		536	95.71%	24		24	4.29%	0	0.00%	
65	2028692	CDDO	CDDO, CISF Unit (SHEP), Salal, Reasi	CISF	46	43	3	39		42	91.30%	4		4	8.70%	0	0.00%	
66	2028946	CDDO	CDDO, CISF Unit DHEP, Dulhasti	CISF	198	181	17	181	1	197	99.49%	0		0	0.00%	1	0.51%	
67	2002792	PAO	RPAO (CISF), Ministry of Home Affairs, Chennai	CISF	3060	2578	482	2337		2819	92.12%	241	119	122	3.99%	119	3.89%	
68	2002840	PAO	RPAO (CISF), Ministry of Home Affairs, Ranchi	CISF	1046	815	231	708		939	89.77%	107		107	10.23%	0	0.00%	5
69	2002851	PAO	PAO (CISF), Ministry of Home Affairs, New Delhi	CISF	10510	8004	2506	6879		9385	89.30%	1125	58	1067	10.15%	58	0.55%	
70	2002873	PAO	RPAO (CISF), Ministry of Home Affairs, Kolkata	CISF	838	655	183	565		748	89.26%	90		90	10.74%	0	0.00%	
				CISF Total	41124	30743	10381	28291	21	38651	93.99%	2452	320	2132	5.18%	341	0.83%	7
71	2005511	PAO	PAO (CRPF), Ministry of Home Affairs, New Delhi	CRPF	117829	116702	1127	88105	1	89231	75.73%	28597		28597	24.27%	1	0.00%	
72	2023140	PAO	RPAO (CRPF), Ministry of Home Affairs, Hyderabad	CRPF	1	1		1		1	100.00%	0		0	0.00%	0	0.00%	
73	2030976	PAO	RPAO (CRPF), Ministry of Home Affairs, Raipur	CRPF	1	1		1		1	100.00%	0		0	0.00%	0	0.00%	
				CRPF Total	117831	116704	1127	88107	1	89233	75.73%	28597	0	28597	24.27%	1	0.00%	0
74	2006185	PAO	PAO XVI (Delhi Police Man Singh Road), Ministry of Home Affairs, New Delhi	DELHI POLICE	11085	5136	5949	3974		9923	89.52%	1162		1162	10.48%	0	0.00%	
75	2008112	PAO	PAO IV (Delhi Police), Ministry of Home Affairs, New Delhi	DELHI POLICE	17289	5055	12234	2964		15198	87.91%	2091		2091	12.09%	0	0.00%	1
				DELHI POLICE	28374	10191	18183	6938	0	25121	88.54%	3253	0	3253	11.46%	0	0.00%	1
76	2011096	CDDO	CDDO, Hindi Teaching Scheme (Western Region), Navi Mumbai	HINDI TEACHIN	2	1	1	1		2	100.00%	0		0	0.00%	0	0.00%	
77	2011170	CDDO	CDDO, Hindi Teaching Scheme (North East Region), Guwahati	HINDI TEACHIN	8	5	3	3		6	75.00%	2		2	25.00%	0	0.00%	
78	2012835	CDDO	CDDO, Hindi Teaching Scheme (Eastern Region), Kolkata	HINDI TEACHIN	2	2		2		2	100.00%	0		0	0.00%	0	0.00%	
				HINDI TEACHI	12	8	4	6	0	10	83.33%	2	0	2	16.67%	0	0.00%	0
79	2014751	CDDO	CDDO, Subsidiary Intelligence Bureau, Srinagar	IB	131	70	61	62		123	93.89%	8		8	6.11%	0	0.00%	
80	2014773	CDDO	CDDO, Subsidiary Intelligence Bureau, Varanasi	IB	36	15	21	13		34	94.44%	2		2	5.56%	0	0.00%	
81	2014784	CDDO	CDDO, Subsidiary Intelligence Bureau, Dibrugarh	IB	141	84	57	71		128	90.78%	13		13	9.22%	0	0.00%	
82	2014810	CDDO	CDDO, Subsidiary Intelligence Bureau, Ahmedabad	IB	141	52	89	51		140	99.29%	1		1	0.71%	0	0.00%	
83	2014843	CDDO	CDDO, Subsidiary Intelligence Bureau, Kolkata	IB	139	73	66	62		128	92.09%	11		11	7.91%	0	0.00%	

Sr No.	PAO Reg No	PAO/C DDO	PAO Name	Head	Associated PRANs	PRAN generated through Legacy Data	New PRAN generated through Phy. Form	IRA Complied (Out of B)	IRA Deserter	Total IRA Complied Subscribers	Percentage of Total IRA Complied	Non-IRA Complied Subscribers	Non-IRA Deserters	Total Non-IRA Complied Subscribers	Percentage of Total Non-IRA Complied	Deserters (Death, Deserting, Resigned)	Percentage of Total Deserters	Under Process
					A	B(=A-C)	C	D	D1	E(=C+D-D1)	F(=E/A)	G(=A-E-D1)	G1	H(=G-G1)	I(=H/A)	J(=D1+G1)	K(=J/A)	L
84	2014913	CDDO	CDDO, Subsidiary Intelligence Bureau, Guwahati	IB	96	26	70	20		90	93.75%	6		6	6.25%	0	0.00%	
85	2015053	CDDO	CDDO, Subsidiary Intelligence Bureau, Aizwal	IB	84	17	67	15		82	97.62%	2		2	2.38%	0	0.00%	
86	2015064	CDDO	CDDO, Subsidiary Intelligence Bureau, Jammu	IB	128	37	91	36		127	99.22%	1		1	0.78%	0	0.00%	
87	2015145	CDDO	CDDO, Subsidiary Intelligence Bureau, Amritsar	IB	139	10	129	10		139	100.00%	0		0	0.00%	0	0.00%	
88	2015156	CDDO	CDDO, Subsidiary Intelligence Bureau, Bangalore	IB	115	72	43	71		114	99.13%	1		1	0.87%	0	0.00%	
89	2015160	CDDO	CDDO, Subsidiary Intelligence Bureau, Raipur	IB	94	48	46	35		81	86.17%	13		13	13.83%	0	0.00%	
90	2015171	CDDO	Office of SIB (ITBF), Leh	IB	76	41	35	38		73	96.05%	3		3	3.95%	0	0.00%	
91	2015182	CDDO	CDDO, Subsidiary Intelligence Bureau, Lucknow	IB	89	33	56	30		86	96.63%	3		3	3.37%	0	0.00%	
92	2015204	CDDO	CDDO, Subsidiary Intelligence Bureau, Bhopal	IB	438	202	236	136		372	84.93%	66		66	15.07%	0	0.00%	
93	2015215	CDDO	CDDO, Subsidiary Intelligence Bureau, Gangtok	IB	85	55	30	50		80	94.12%	5		5	5.88%	0	0.00%	
94	2015226	CDDO	CDDO, Subsidiary Intelligence Bureau, Chennai	IB	139	67	72	55		127	91.37%	12		12	8.63%	0	0.00%	
95	2015241	CDDO	CDDO, Office of The Deputy Director, Home Affairs, Nagpur	IB	66	15	51	15		66	100.00%	0		0	0.00%	0	0.00%	
96	2015252	CDDO	CDDO, Subsidiary Intelligence Bureau, Trivandrum	IB	38	16	22	13		35	92.11%	3		3	7.89%	0	0.00%	
97	2015322	CDDO	CDDO, Subsidiary Intelligence Bureau, Siliguri	IB	24	6	18	4		22	91.67%	2		2	8.33%	0	0.00%	
98	2015344	CDDO	CDDO, Subsidiary Intelligence Bureau, Patna	IB	73	31	42	29		71	97.26%	2		2	2.74%	0	0.00%	
99	2015355	CDDO	CDDO, Subsidiary Intelligence Bureau, Mumbai	IB	363	264	99	248	1	346	95.32%	16		16	4.41%	1	0.28%	
100	2015451	CDDO	CDDO, Subsidiary Intelligence Bureau, Dehradun	IB	44	16	28	16		44	100.00%	0		0	0.00%	0	0.00%	
101	2015462	CDDO	CDDO, Subsidiary Intelligence Bureau, Hyderabad	IB	102	64	38	63		101	99.02%	1		1	0.98%	0	0.00%	
102	2015495	CDDO	CDDO, Subsidiary Intelligence Bureau, Agartala	IB	49	26	23	24		47	95.92%	2		2	4.08%	0	0.00%	
103	2015591	CDDO	CDDO, Subsidiary Intelligence Bureau, Chandigarh	IB	147	36	111	28		139	94.56%	8		8	5.44%	0	0.00%	
104	2015613	CDDO	CDDO, Subsidiary Intelligence Bureau, Kohima	IB	144	103	41	89		130	90.28%	14		14	9.72%	0	0.00%	
105	2016291	CDDO	CDDO, Office of The Section Officer, Home Affairs, Vijayawada	IB	45	28	17	28		45	100.00%	0		0	0.00%	0	0.00%	
106	2016394	CDDO	CDDO, Office of The Section Officer, Home Affairs, Shimla	IB	83	28	55	26		81	97.59%	2		2	2.41%	0	0.00%	
107	2016405	CDDO	CDDO, Subsidiary Intelligence Bureau, Kalimpong, Darjeeling	IB	61	13	48	13		61	100.00%	0		0	0.00%	0	0.00%	
108	2016416	CDDO	CDDO, Subsidiary Intelligence Bureau, Imphal	IB	72	41	31	32		63	87.50%	9		9	12.50%	0	0.00%	
109	2016674	CDDO	CDDO, Subsidiary Intelligence Bureau, Itanagar	IB	128	58	70	55		125	97.66%	3		3	2.34%	0	0.00%	
110	2016685	CDDO	CDDO, Subsidiary Intelligence Bureau, Jaipur	IB	255	68	187	55		242	94.90%	13		13	5.10%	0	0.00%	
111	2016700	CDDO	CDDO, Subsidiary Intelligence Bureau, Bhubaneswar	IB	56	24	32	21		53	94.64%	3		3	5.36%	0	0.00%	
112	2016733	CDDO	CDDO, Subsidiary Intelligence Bureau Ministry of Home Affairs, Ranchi	IB	78	29	49	27		76	97.44%	2		2	2.56%	0	0.00%	
113	2002803	PAO	RPAO (IB), Ministry of Home Affairs, Shillong	IB	94	47	47	43		90	95.74%	4		4	4.26%	0	0.00%	
114	2005522	PAO	PAO (IB), Ministry of Home Affairs, New Delhi	IB	1226	1046	180	825		1005	81.97%	221		221	18.03%	0	0.00%	
				IB Total	5219	2861	2358	2409	1	4766	91.32%	452	0	452	8.66%	1	0.02%	0
115	2005496	PAO	PAO (ITBP), Ministry of Home Affairs, New Delhi	ITBP	25683	25238	445	19511		19956	77.70%	5727		5727	22.30%	0	0.00%	
116	2029974	PAO	RPAO (ITBP), Ministry of Home Affairs, Shillong	ITBP	1	1	1	1		1	100.00%	0		0	0.00%	0	0.00%	
				ITBP Total	25684	25239	445	19512	0	19957	77.70%	5727	0	5727	22.30%	0	0.00%	0
117	2008694	CDDO	CDDO, Central Forensic Science Laboratory, Chandigarh	MISC	9	3	6	3		9	100.00%	0		0	0.00%	0	0.00%	
118	2010713	CDDO	CDDO, Central Forensic Science Laboratory, Hyderabad	MISC	10	7	3	1		4	40.00%	6		6	60.00%	0	0.00%	
119	2014795	CDDO	CDDO, National Fire Service College, Nagpur	MISC	11	6	5			5	45.45%	6		6	54.55%	0	0.00%	
120	2014935	CDDO	CDDO, Central Forensic Science Laboratory, Kolkata	MISC	10	3	7	3		10	100.00%	0		0	0.00%	0	0.00%	
121	2014950	CDDO	CDDO, SVBP National Police Academy, Hyderabad	MISC	32	20	12	6	1	17	53.13%	14		14	43.75%	1	3.13%	
122	2002781	PAO	PAO (Pension & Misc.), Ministry of Home Affairs, New Delhi	MISC	77	19	58	17		75	97.40%	2		2	2.60%	0	0.00%	
123	2005452	PAO	PAO (DCPW), Ministry of Home Affairs, New Delhi	MISC	71	26	45	24		69	97.18%	2		2	2.82%	0	0.00%	
124	2006395	PAO	PAO (National Security Gaurd), Ministry of Home Affairs, New Delhi	MISC	276	259	17	176		193	69.93%	83		83	30.07%	0	0.00%	
125	2006406	PAO	PAO (Sectt), Ministry of Home Affairs, New Delhi	MISC	948	902	46	836		882	93.04%	66		66	6.96%	0	0.00%	
126	2029064	PAO	PAO (NDMA), Ministry of Home Affairs, New Delhi	MISC	8	6	2	6		8	100.00%	0		0	0.00%	0	0.00%	

Sr No.	PAO Reg No	PAO/C DDO	PAO Name	Head	Associated PRANs	PRAN generated through Legacy Data	New PRAN generated through Phy. Form	IRA Complied (Out of B)	IRA Deserters	Total IRA Complied Subscribers	Percentage of Total IRA Complied	Non-IRA Complied Subscribers	Non-IRA Deserters	Total Non-IRA Complied Subscribers	Percentage of Total Non-IRA Complied	Deserters (Death, Resigning)	Percentage of Total Deserters	Under Process
					A	B(=A-C)	C	D	D1	E(=C+D-D1)	F(=E/A)	G(=A-E-D1)	G1	H(=G-G1)	I(=H/A)	J(=D1+G1)	K(=J/A)	L
				MISC Total	1452	1251	201	1072	1	1272	87.60%	179	0	179	12.33%	1	0.07%	0
127	2030210	PAO	RPAO (NSG), Ministry of Home Affairs, Kolkata	NSG	4	2	2	2		4	100.00%	0		0	0.00%	0	0.00%	
				NSG Total	4	2	2	2	0	4	100.00%	0	0	0	0.00%	0	0.00%	0
128	2013561	CDDO	CDDO, Frontier Head Quarters Sashastra Seema Bal, Guwahati	SSB	10370	9772	598	8747		9345	90.12%	1025		1025	9.88%	0	0.00%	
129	2005474	PAO	PAO (Shashastra Seema Bal), Ministry of Home Affairs, New Delhi	SSB	1444	1306	138	1041		1179	81.65%	265		265	18.35%	0	0.00%	
130	2006174	PAO	ZPAO (Shashastra Seema Bal), Ministry of Home Affairs, Lucknow	SSB	7626	6946	680	6236		6916	90.69%	710		710	9.31%	0	0.00%	
131	2007143	PAO	ZPAO (Shashastra Seema Bal), Ministry of Home Affairs, Patna	SSB	10196	9923	273	8396		8669	85.02%	1527		1527	14.98%	0	0.00%	
				SSB Total	29636	27947	1689	24420	0	26109	88.10%	3527	0	3527	11.90%	0	0.00%	0
				Grand Total	330519	287548	42971	215848	150	258669	78.26%	71700	1284	70416	21.30%	1434	0.43%	8

Sr. No.	PAO Reg No	PAO / CDDO	PAO NAME	Head	SCF Pending for Matching & Booking	Total of Fund Transfer detail received	Inadequate Information Received	Information sent to Bank	Upload by PAO, Directly Downloadable at Bank	FRC Awaited (Accepted by TB)	Inadequate Information	Yet to be received	Fund detail not received
35	2015366	CDDO	CDDO, Central Industrial Security Force	CISF	4	4			4		4		
36	2028692	CDDO	CDDO, CISF Unit (SHEP), Salal, Reasi	CISF	1	1			1			1	
37	2002873	PAO	RPAO (CISF), Ministry of Home Affairs,	CISF	1								1
				CISF Total	36	22	0	0	22	0	12	10	14
38	2005511	PAO	PAO (CRPF), Ministry of Home Affairs,	CRPF	5	4			4		1	3	1
				CRPF Total	5	4	0	0	4	0	1	3	1
39	2006185	PAO	PAO XVI (Delhi Police Man Singh Road)	DELHI POLICE	1	1			1			1	
40	2008112	PAO	PAO IV (Delhi Police), Ministry of Home	DELHI POLICE	3	1			1			1	2
				DELHI POLICE	4	2	0	0	2	0	0	2	2
41	2011096	CDDO	CDDO, Hindi Teaching Scheme (Western)	HINDI TEACHING	1								1
42	2011170	CDDO	CDDO, Hindi Teaching Scheme (North)	HINDI TEACHING	2	2			2		2		
43	2012835	CDDO	CDDO, Hindi Teaching Scheme (Eastern)	HINDI TEACHING	1	1			1		1		
				HINDI TEACHING	4	3	0	0	3	0	3	0	1
44	2014751	CDDO	CDDO, Subsidiary Intelligence Bureau,	IB	10	2			2		2		8
45	2014773	CDDO	CDDO, Subsidiary Intelligence Bureau,	IB	1								1
46	2014784	CDDO	CDDO, Subsidiary Intelligence Bureau,	IB	1								1
47	2014810	CDDO	CDDO, Subsidiary Intelligence Bureau,	IB	3								3
48	2014843	CDDO	CDDO, Subsidiary Intelligence Bureau,	IB	24	13			13		10	3	11
49	2014913	CDDO	CDDO, Subsidiary Intelligence Bureau,	IB	4								4
50	2015053	CDDO	CDDO, Subsidiary Intelligence Bureau,	IB	3								3
51	2015064	CDDO	CDDO, Subsidiary Intelligence Bureau,	IB	17								17
52	2015145	CDDO	CDDO, Subsidiary Intelligence Bureau,	IB	7								7
53	2015156	CDDO	CDDO, Subsidiary Intelligence Bureau,	IB	16	1			1		1		15
54	2015160	CDDO	CDDO, Subsidiary Intelligence Bureau,	IB	36	7			7		1	6	29
55	2015182	CDDO	CDDO, Subsidiary Intelligence Bureau,	IB	29	16			16		16		13
56	2015204	CDDO	CDDO, Subsidiary Intelligence Bureau,	IB	2								2
57	2015215	CDDO	CDDO, Subsidiary Intelligence Bureau,	IB	28	17			17		16	1	11
58	2015226	CDDO	CDDO, Subsidiary Intelligence Bureau,	IB	23	17			17		8	9	6
59	2015241	CDDO	CDDO, Office of The Deputy Director, Home	IB	6	4			4		4		2
60	2015252	CDDO	CDDO, Subsidiary Intelligence Bureau,	IB	19	5			5		1	4	14
61	2015322	CDDO	CDDO, Subsidiary Intelligence Bureau,	IB	9	5			5		5		4
62	2015344	CDDO	CDDO, Subsidiary Intelligence Bureau,	IB	7	4			4		1	3	3
63	2015451	CDDO	CDDO, Subsidiary Intelligence Bureau,	IB	12	3			3		3		9
64	2015462	CDDO	CDDO, Subsidiary Intelligence Bureau,	IB	21	17			17		9	8	4
65	2015495	CDDO	CDDO, Subsidiary Intelligence Bureau,	IB	3	1			1			1	2
66	2015591	CDDO	CDDO, Subsidiary Intelligence Bureau,	IB	3								3
67	2015613	CDDO	CDDO, Subsidiary Intelligence Bureau,	IB	8	1			1			1	7
68	2016291	CDDO	CDDO, Office of The Section Officer, Home	IB	2	1			1			1	1

Sr. No.	PAO Reg No	PAO / CDDO	PAO NAME	Head	SCF Pending for Matching & Booking	Total of Fund Transfer detail received	Inadequate Information Received	Information sent to Bank	Upload by PAO, Directly Downloadable at Bank	FRC Awaited (Accepted by TB)	Inadequate Information	Yet to be received	Fund detail not received
69	2016394	CDDO	CDDO, Office of The Section Officer, Ho	IB	2	1			1			1	1
70	2016405	CDDO	CDDO, Subsidiary Intelligence Bureau,	IB	2								2
71	2016416	CDDO	CDDO, Subsidiary Intelligence Bureau,	IB	2	1			1		1		1
72	2016674	CDDO	CDDO, Subsidiary Intelligence Bureau,	IB	12								12
73	2016700	CDDO	CDDO, Subsidiary Intelligence Bureau,	IB	4								4
74	2016733	CDDO	CDDO, Subsidiary Intelligence Bureau	IB	3	1			1			1	2
75	2002803	PAO	RPAO (IB), Ministry of Home Affairs, S	IB	20	15			15		11	4	5
76	2005522	PAO	PAO (IB), Ministry of Home Affairs, Ne	IB	2								2
77	2015171	PAO	Office of SIB (ITBF), Leh	IB	7	6			6		5	1	1
				IB Total	348	138	0	0	138	0	94	44	210
78	2005496	PAO	PAO (ITBP), Ministry of Home Affairs,	ITBP	1	1			1			1	
79	2029974	PAO	RPAO (ITBP), Ministry of Home Affairs	ITBP	1								1
				ITBP Total	2	1	0	0	1	0	0	1	1
80	2008694	CDDO	CDDO, Central Forensic Science Labora	MISC	2								2
81	2010713	CDDO	CDDO, Central Forensic Science Labora	MISC	1	1			1		1		
82	2014935	CDDO	CDDO, Central Forensic Science Labora	MISC	9	8			8		5	3	1
83	2014950	CDDO	CDDO, SVBP National Police Academy,	MISC	1								1
84	2002781	PAO	PAO (Pension & Misc.), Ministry of Hor	MISC	2	2			2			2	
85	2006395	PAO	PAO (National Security Gaurd), Ministr	MISC	2								2
86	2029064	PAO	PAO (NDMA), Ministry of Home Affairs	MISC	2	2			2			2	
				MISC Total	19	13	0	0	13	0	6	7	6
87	2030210	PAO	RPAO (NSG), Ministry of Home Affairs,	NSG	2	2			2		1	1	
				NSG Total	2	2	0	0	2	0	1	1	0
88	2005474	PAO	PAO (Shashastra Seema Bal), Ministry	SSB	1								1
89	2007143	PAO	ZPAO (Shashastra Seema Bal), Ministr	SSB	1	1			1		1		
				SSB Total	2	1	0	0	1	0	1	0	1
				Grand Total	510	253	0	6	247	0	155	98	257

Sr. No.	PrAO Reg NO	PrAO Name/Department/Ministry	No. of PAOs /CDDOs Pending for Matching & Booking		Total SCF uploaded	SCF Matched & Booked	SCF Pending for Matching & Booking	Percentage of SCFs not matched
			PAOs	CDDOs				
1	3000476	Pr. AO, Andaman and Nicobar Islands Administration	3	34	1138	997	141	12.39%
2	3001224	Pr. AO, Union Territory of Lakshadweep	1	0	1	0	1	100.00%
			4	34	1139	997	142	12.47%

***Kindly Note:**

While calculating for the SCFs, only the SCFs uploaded by the PAO user has been considered. SCFs uploaded by the CRA users on behalf of the PAO were not considered.

Sr. No.	PRAO Reg No	PAO REG NO	PAO / CDDO	PAO NAME	Total SCF uploaded	SCF matched & Booked	SCF Pending for Matching & Booking	Percentage of SCFs not matched
1	3000476	2018870	CDDO	CDDO, Minor Irrigation Division (APWD), Hutbay, Little Andaman	33	30	3	9.09%
2	3000476	2018903	CDDO	CDDO, Office of the Sub Pay and Accounts Officer, Nancowrie, Nicobar	8	8	0	0.00%
3	3000476	2019636	CDDO	CDDO, Construction Division No I (APWD), Ranghat	33	33	0	0.00%
4	3000476	2019640	CDDO	CDDO, Construction Division (APWD), Car Nicobar	20	14	6	30.00%
5	3000476	2019651	CDDO	CDDO, Divisional Forest Office, Wild Life-II Division, Mayabunder, Andaman	27	27	0	0.00%
6	3000476	2019662	CDDO	CDDO, Deputy Conservator of Forests, Port Blair, Andaman	33	33	0	0.00%
7	3000476	2019673	CDDO	CDDO, Divisional Forest Office, Baratang Division, Andaman	14	14	0	0.00%
8	3000476	2019684	CDDO	CDDO, Construction Division No I (APWD), Port Blair	20	13	7	35.00%
9	3000476	2019695	CDDO	CDDO, Stores Division (APWD), Port Blair	35	23	12	34.29%
10	3000476	2019706	CDDO	CDDO, Port Blair North Division (APWD), Port Blair	28	27	1	3.57%
11	3000476	2019710	CDDO	CDDO, South Andaman Division (APWD), Port Blair	35	32	3	8.57%
12	3000476	2019721	CDDO	CDDO, Port Blair South Division (APWD), Port Blair	30	30	0	0.00%
13	3000476	2019732	CDDO	CDDO, Workshop Division, Port Blair	26	25	1	3.85%
14	3000476	2019743	CDDO	CDDO, Divisional Forest Officer, Diglipur, Andaman	35	35	0	0.00%
15	3000476	2019754	CDDO	CDDO, Construction Division (APWD), Kamotra	33	33	0	0.00%
16	3000476	2019765	CDDO	CDDO, NACD, APWD, Mayabunder, Andaman	31	27	4	12.90%
17	3000476	2019776	CDDO	CDDO, Office of the Divisional Forest Officer, Mayabunder	35	19	16	45.71%
18	3000476	2019780	CDDO	CDDO, Office of the Dy Conservator of Forests, Wild Life Div. 1, Port Blair	35	33	2	5.71%
19	3000476	2019791	CDDO	CDDO, Office of the Divisional Forest Officer, Little Andaman	15	15	0	0.00%
20	3000476	2019802	CDDO	CDDO, Office of the Divisional Forest Officer, Nicobar Div., Campbell Bay	33	22	11	33.33%
21	3000476	2019813	CDDO	CDDO, Office of the Executive Engineer, E&M Division, APWD, Port Blair	33	18	15	45.45%
22	3000476	2019824	CDDO	CDDO, Office of the Executive Engineer, PHE Division, APWD, Port Blair	31	26	5	16.13%
23	3000476	2019835	CDDO	CDDO, Divisional Forest Office, South Andaman	36	35	1	2.78%
24	3000476	2019846	CDDO	CDDO, Deputy Conservator of Forests (Working Plan Division), Chatham	36	34	2	5.56%
25	3000476	2019850	CDDO	CDDO, Construction Division, APWD, Campbell Bay	11	11	0	0.00%
26	3000476	2019861	CDDO	CDDO, Construction Division, APWD, Diglipur	38	38	0	0.00%
27	3000476	2019872	CDDO	CDDO, Road Constrction Division, APWD, Wimberlygunj	38	37	1	2.63%
28	3000476	2020863	CDDO	CDDO, O/o The Dy Conservator of Forest, Mill Divn, Chatham, Andaman	30	29	1	3.33%
29	3000476	2021386	CDDO	CDDO, Office of The Divisional Forest Officer, Middle Andaman, Rangat	34	34	0	0.00%
30	3000476	2022742	CDDO	CDDO, Sub Pay & Accounts Office, Mayabunder, Andaman	23	7	16	69.57%
31	3000476	2022753	CDDO	CDDO, Sub Pay & Accounts Office, Diglipur, Andaman	22	22	0	0.00%
32	3000476	2024131	CDDO	CDDO, Office of The Assistant Commissioner, Campbell Bay, Nicobar	36	28	8	22.22%
33	3000476	2024142	CDDO	CDDO, Minor Irrigation Division (APWD). Hutbay, Andaman	36	36	0	0.00%
34	3000476	2024190	CDDO	CDDO, Construction Division No. III (APWD), Prothrapur, South Andaman	38	33	5	13.16%
35	3000476	2018612	PAO	PAO, Union Territory of Andaman & Nicobar, Car Nicobar	40	40	0	0.00%
36	3000476	2018741	PAO	PAO, Union Territory of Andaman & Nicobar, Rangat	40	28	12	30.00%
37	3000476	2018752	PAO	PAO-I, Union Territory of Andaman & Nicobar, Port Blair	57	48	9	15.79%
38	3001224	2019006	PAO	PAO, Union Territory of Lakshadweep, Kavaratti Island	1	0	1	100.00%
					1139	997	142	12.47%

Ageing Analysis - SCF not matched & booked in r/o Pr. AO, Andaman and Nicobar Islands Administration

Sr. No.	PrAO Reg No	PAO REG NO	PAO/ CDDO	PAO NAME	SCFs not Matched for						
					Upto 7 days	8-15 days	16-30 days	31-60 days	61-90 days	91-365 days	366 days onward
1	3000476	2018870	CDDO	CDDO, Minor Irrigation Division (APWD), Hutbay, Little Andaman						2	1
2	3000476	2019640	CDDO	CDDO, Construction Division (APWD), Car Nicobar						2	4
3	3000476	2019684	CDDO	CDDO, Construction Division No I (APWD), Port Blair							7
4	3000476	2019695	CDDO	CDDO, Stores Division (APWD), Port Blair			2			4	6
5	3000476	2019706	CDDO	CDDO, Port Blair North Division (APWD), Port Blair							1
6	3000476	2019710	CDDO	CDDO, South Andaman Division (APWD), Port Blair		1				2	
7	3000476	2019732	CDDO	CDDO, Workshop Division, Port Blair							1
8	3000476	2019765	CDDO	CDDO, NACD, APWD, Mayabunder, Andaman							4
9	3000476	2019776	CDDO	CDDO, Office of the Divisional Forest Officer, Mayabunder	1					15	
10	3000476	2019780	CDDO	CDDO, Office of the Dy Conservator of Forests, Wild Life Div. 1, Port Blair	2						
11	3000476	2019802	CDDO	CDDO, Office of the Divisional Forest Officer, Nicobar Div., Campbell Bay						3	8
12	3000476	2019813	CDDO	CDDO, Office of the Executive Engineer, E&M Division, APWD, Port Blair					1	1	13
13	3000476	2019824	CDDO	CDDO, Office of the Executive Engineer, PHE Division, APWD, Port Blair						5	
14	3000476	2019835	CDDO	CDDO, Divisional Forest Office, South Andaman	1						
15	3000476	2019846	CDDO	CDDO, Deputy Conservator of Forests (Working Plan Division), Chatham		1		1			
16	3000476	2019872	CDDO	CDDO, Road Constrction Division, APWD, Wimberlygunj							1
17	3000476	2020863	CDDO	CDDO, O/o The Dy Conservator of Forest, Mill Divn, Chatham, Andaman						1	
18	3000476	2022742	CDDO	CDDO, Sub Pay & Accounts Office, Mayabunder, Andaman						6	10
19	3000476	2024131	CDDO	CDDO, Office of The Assistant Commissioner, Campbell Bay, Nicobar						8	
20	3000476	2024190	CDDO	CDDO, Construction Division No. III (APWD), Prothrapur, South Andaman	2		2			1	
21	3000476	2018741	PAO	PAO, Union Territory of Andaman & Nicobar, Rangat		1		3		8	
22	3000476	2018752	PAO	PAO-I, Union Territory of Andaman & Nicobar, Port Blair						6	3
23	3001224	2019006	PAO	PAO, Union Territory of Lakshadweep, Kavaratti Island		1					
					6	4	4	4	1	64	59

Sr. No.	PrAO Reg NO	PAO REG NO	PAO / CDDO	PAO NAME	SCF Pending for Matching & Booking	Fund Transfer details				Bank Remarks			
						Total of Fund Transfer detail received	Inadequate Information Received	Information sent to Bank	Upload by PAO, Directly Downloadable at Bank	FRC Awaited (Accepted by TB)	Inadequate Information	Yet to be received	Fund detail not received
1	3000476	2018870	CDDO	CDDO, Minor Irrigation Division (APWD), Hutbay, Little Andaman	3	3			3		2	1	
2	3000476	2019640	CDDO	CDDO, Construction Division (APWD), Car Nicobar	6	2			2		2		4
3	3000476	2019684	CDDO	CDDO, Construction Division No I (APWD), Port Blair	7	5			5		5		2
4	3000476	2019695	CDDO	CDDO, Stores Division (APWD), Port Blair	12	11			11		10	1	1
5	3000476	2019706	CDDO	CDDO, Port Blair North Division (APWD), Port Blair	1	1			1				1
6	3000476	2019710	CDDO	CDDO, South Andaman Division (APWD), Port Blair	3	3			3		2		1
7	3000476	2019732	CDDO	CDDO, Workshop Division, Port Blair	1	1			1		1		
8	3000476	2019765	CDDO	CDDO, NACD, APWD, Mayabunder, Andaman	4	4			4		3		1
9	3000476	2019776	CDDO	CDDO, Office of the Divisional Forest Officer, Mayabunder	16	15			15		15		1
10	3000476	2019780	CDDO	CDDO, Office of the Dy Conservator of Forests, Wild Life Div. 1, Port Blair	2	1			1				1
11	3000476	2019802	CDDO	CDDO, Office of the Divisional Forest Officer, Nicobar Div., Campbell Bay	11	11			11		3		8
12	3000476	2019813	CDDO	CDDO, Office of the Executive Engineer, E&M Division, APWD, Port Blair	15	13			13		13		2
13	3000476	2019824	CDDO	CDDO, Office of the Executive Engineer, PHE Division, APWD, Port Blair	5	5			5		5		
14	3000476	2019835	CDDO	CDDO, Divisional Forest Office, South Andaman	1	1			1				1
15	3000476	2019846	CDDO	CDDO, Deputy Conservator of Forests (Working Plan Division), Chatham	2								2
16	3000476	2019872	CDDO	CDDO, Road Construction Division, APWD, Wimberlygunj	1	1			1		1		
17	3000476	2020863	CDDO	CDDO, O/o The Dy Conservator of Forest, Mill Divn, Chatham, Andaman	1	1			1		1		
18	3000476	2022742	CDDO	CDDO, Sub Pay & Accounts Office, Mayabunder, Andaman	16	16			16		15		1
19	3000476	2024131	CDDO	CDDO, Office of The Assistant Commissioner, Campbell Bay, Nicobar	8	8			8		7		1
20	3000476	2024190	CDDO	CDDO, Construction Division No. III (APWD), Prothrapur, South Andaman	5	3			3		3		2
21	3000476	2018741	PAO	PAO, Union Territory of Andaman & Nicobar, Rangat	12	12			12		10		2
22	3000476	2018752	PAO	PAO-I, Union Territory of Andaman & Nicobar, Port Blair	9	9			9		9		
23	3001224	2019006	PAO	PAO, Union Territory of Lakshadweep, Kavaratti Island	1	1			1		1		
					142	127	0	0	127	0	108	19	15

Sr No.	PrAO Reg No	PAO Reg No	PAO / CDDO	PAO Name	PRAN generated through Legacy Data	New PRAN generated through Phy. Form	IRA Complied (Out of B)	IRA Deserters	Total IRA Complied Subscribers	Percentage of Total IRA Complied	Non-IRA Complied Subscribers	Non-IRA Deserters	Total Non-IRA Complied Subscribers	Percentage of Total Non-IRA Complied	Total Deserters (Death, Deserter, Resigned, Terminated)	Percentage of Total Deserters	Under Process
					B(=A-C)	C	D	D1	E(=C+D-D1)	F(=E/A)	G(=A-E-D1)	G1	H(=G-G1)	I(=H/A)	J(=D1+G1)	K(=J/A)	L
1	3000476	2018870	CDDO	CDDO, Minor Irrigation Division (APWD), Hutbay, Little Andaman	42	121	41		162	99.39%	1		1	0.61%	0	0.00%	
2	3000476	2018903	CDDO	CDDO, Office of the Sub Pay and Accounts Officer, Nancowrie, Nicobar	144	99	124		223	91.77%	20		20	8.23%	0	0.00%	
3	3000476	2019636	CDDO	CDDO, Construction Division No I (APWD), Ranghat	2	9	2		11	100.00%	0		0	0.00%	0	0.00%	
4	3000476	2019651	CDDO	CDDO, Divisional Forest Office, Wild Life-II Division, Mayabunder, Andaman	13	23	12		35	97.22%	1		1	2.78%	0	0.00%	
5	3000476	2019662	CDDO	CDDO, Deputy Conservator of Forests, Port Blair, Andaman	11	16	10		26	96.30%	1		1	3.70%	0	0.00%	
6	3000476	2019673	CDDO	CDDO, Divisional Forest Office, Baratang Division, Andaman	8	22	8		30	100.00%	0		0	0.00%	0	0.00%	
7	3000476	2019695	CDDO	CDDO, Stores Division (APWD), Port Blair	2		2		2	100.00%	0		0	0.00%	0	0.00%	
8	3000476	2019706	CDDO	CDDO, Port Blair North Division (APWD), Port Blair	0	1			1	100.00%	0		0	0.00%	0	0.00%	
9	3000476	2019710	CDDO	CDDO, South Andaman Division (APWD), Port Blair	1		1		1	100.00%	0		0	0.00%	0	0.00%	
10	3000476	2019721	CDDO	CDDO, Port Blair South Division (APWD), Port Blair	1	1			1	50.00%	1		1	50.00%	0	0.00%	
11	3000476	2019732	CDDO	CDDO, Workshop Division, Port Blair	1	1	1		2	100.00%	0		0	0.00%	0	0.00%	
12	3000476	2019743	CDDO	CDDO, Divisional Forest Officer, Diglipur, Andaman	49	115	48		163	99.39%	1		1	0.61%	0	0.00%	
13	3000476	2019754	CDDO	CDDO, Construction Division (APWD), Kamotra	1	3	1		4	100.00%	0		0	0.00%	0	0.00%	
14	3000476	2019776	CDDO	CDDO, Office of the Divisional Forest Officer, Mayabunder	36	85	34		119	98.35%	2		2	1.65%	0	0.00%	
15	3000476	2019780	CDDO	CDDO, Office of the Dy Conservator of Forests, Wild Life Div. 1, Port Blair	33	34	33		67	100.00%	0		0	0.00%	0	0.00%	
16	3000476	2019791	CDDO	CDDO, Office of the Divisional Forest Officer, Little Andaman	15	48	14		62	98.41%	1		1	1.59%	0	0.00%	
17	3000476	2019802	CDDO	CDDO, Office of the Divisional Forest Officer, Nicobar Div., Campbell Bay	30	24	26		50	92.59%	4		4	7.41%	0	0.00%	
18	3000476	2019813	CDDO	CDDO, Office of the Executive Engineer, E&M Division, APWD, Port Blair	2		1		1	50.00%	1		1	50.00%	0	0.00%	
19	3000476	2019824	CDDO	CDDO, Office of the Executive Engineer, PHE Division, APWD, Port Blair	1	1	1		2	100.00%	0		0	0.00%	0	0.00%	
20	3000476	2019835	CDDO	CDDO, Divisional Forest Office, South Andaman	68	87	66		153	98.71%	2		2	1.29%	0	0.00%	
21	3000476	2019846	CDDO	CDDO, Deputy Conservator of Forests (Working Plan Division), Chatham	26	22	23		45	93.75%	3	3	0	0.00%	3	6.25%	
22	3000476	2019850	CDDO	CDDO, Construction Division, APWD, Campbell Bay	1	1	1		2	100.00%	0		0	0.00%	0	0.00%	
23	3000476	2019861	CDDO	CDDO, Construction Division, APWD, Diglipur	23		23		23	100.00%	0		0	0.00%	0	0.00%	
24	3000476	2019872	CDDO	CDDO, Road Construction Division, APWD, Wimblerlygunj	1	1	1		2	100.00%	0		0	0.00%	0	0.00%	
25	3000476	2020863	CDDO	CDDO, O/o The Dy Conservator of Forest, Mill Divn, Chatham, Andaman	91	42	85		127	95.49%	6		6	4.51%	0	0.00%	
26	3000476	2021386	CDDO	CDDO, Office of The Divisional Forest Officer, Middle Andaman, Rangat	55	100	49		149	96.13%	6		6	3.87%	0	0.00%	
27	3000476	2022742	CDDO	CDDO, Sub Pay & Accounts Office, Mayabunder, Andaman	117	140	103		243	94.55%	14		14	5.45%	0	0.00%	
28	3000476	2022753	CDDO	CDDO, Sub Pay & Accounts Office, Diglipur, Andaman	161	167	152		319	97.26%	9		9	2.74%	0	0.00%	
29	3000476	2024131	CDDO	CDDO, Office of The Assistant Commissioner, Campbell Bay, Nicobar	80	60	62		122	87.14%	18		18	12.86%	0	0.00%	
30	3000476	2024142	CDDO	CDDO, Minor Irrigation Division (APWD), Hutbay, Andaman	3	1	3		4	100.00%	0		0	0.00%	0	0.00%	
31	3000476	2018612	PAO	PAO, Union Territory of Andaman & Nicobar, Car Nicobar	136	79	122		201	93.49%	14		14	6.51%	0	0.00%	
32	3000476	2018741	PAO	PAO, Union Territory of Andaman & Nicobar, Rangat	96	267	82		349	96.14%	14		14	3.86%	0	0.00%	
33	3000476	2018752	PAO	PAO-I, Union Territory of Andaman & Nicobar, Port Blair	1104	2495	865		3360	93.36%	239		239	6.64%	0	0.00%	7
34	3001224	2019006	PAO	PAO, Union Territory of Lakshadweep, Kavaratti Island	756	52	589		641	79.33%	167		167	20.67%	0	0.00%	
					3110	4117	2585	0	6702	92.74%	525	3	522	7.22%	3	0.04%	7